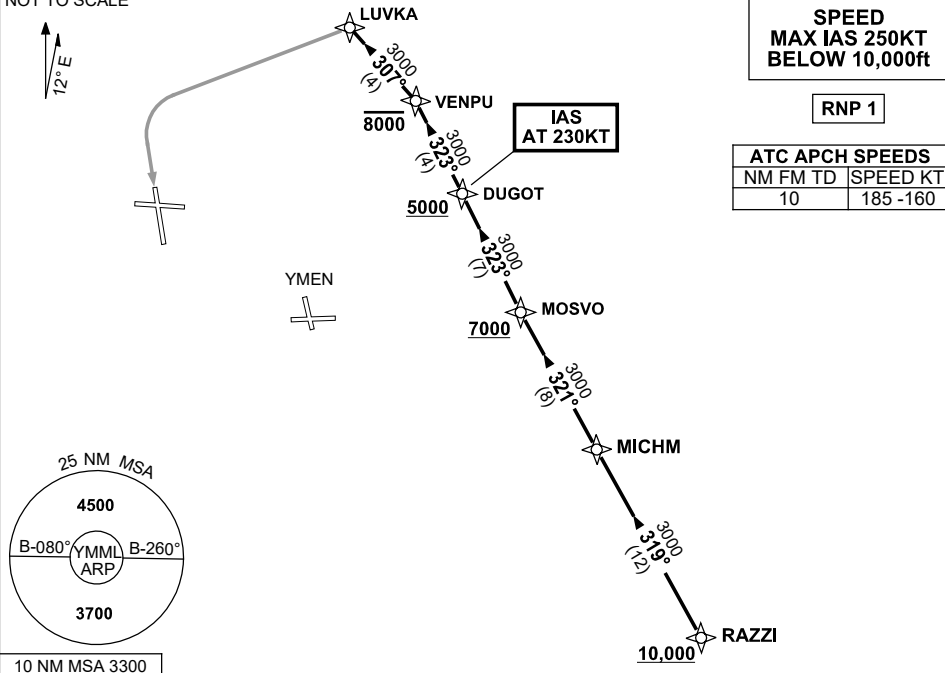


**STANDARD INSTRUMENT ARRIVAL (STAR)  
RAZZI ONE MIKE ARRIVAL (RNAV)  
MELBOURNE, VIC (YMML)**

12 JUN 2025

|                     |              |              |              |   |
|---------------------|--------------|--------------|--------------|---|
| ATIS<br>114.1 118.0 | APP<br>132.0 | TWR<br>120.5 | SMC<br>121.7 | Bearings are Magnetic.<br>Elevations in FEET AMSL |
|---------------------|--------------|--------------|--------------|---|

NOT TO SCALE



**ARRIVAL: RAZZI ONE MIKE**

**Cross** RAZZI AT or ABV 10,000ft, then:

**RWY 16:**

- From RAZZI track 319° to MICHM
- Turn RIGHT, track 321° to MOSVO  
**Cross** MOSVO AT or ABV 7000ft
- Turn RIGHT, track 323° to DUGOT  
**Cross** DUGOT AT or ABV 5000ft  
**IAS AT** 230KT from DUGOT
- Track 323° to VENPU  
**Cross** VENPU AT or BLW 8000ft
- Turn LEFT, track 307° to LUVKA
- Turn LEFT, track via RNP M RWY 16 (AR)

**COMMUNICATIONS FAILURE: PROCEDURE IN IMC**

- Squawk 7600, comply with vertical navigation requirements, but not below MSA.
- Track via the latest STAR clearance to the nominated runway, then fly the most suitable approach in accordance with ERS A EMERG Section 1.5.