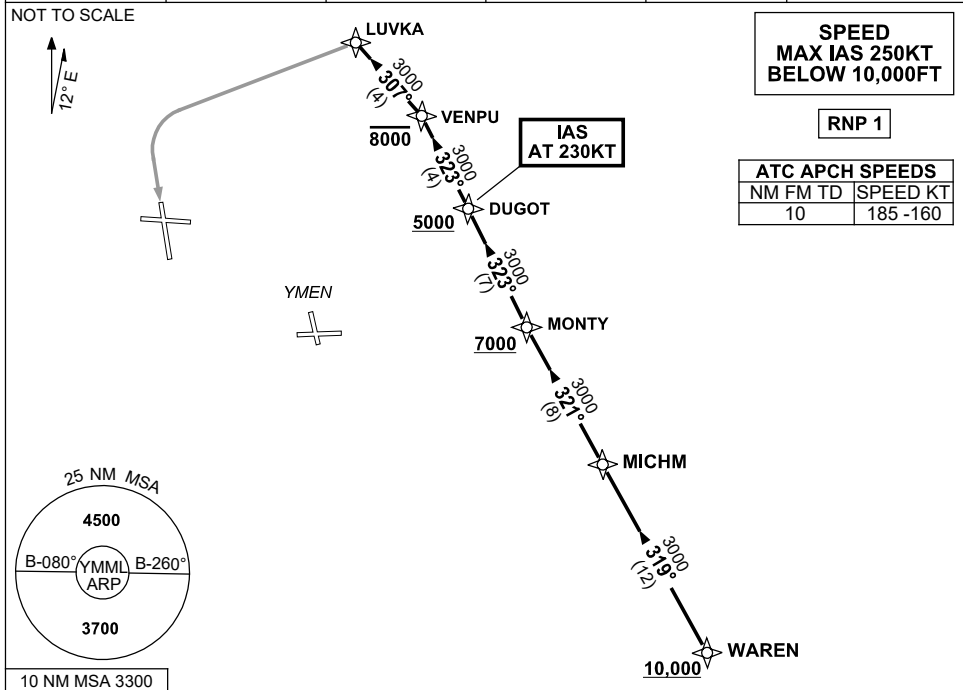


**STANDARD INSTRUMENT ARRIVAL (STAR)  
WAREN EIGHT MIKE ARRIVAL (RNAV)  
MELBOURNE, VIC (YMML)**

**21 MAR 2024**

ATIS 114.1 118.0	APP 132.0	TWR 120.5	SMC 121.7	Bearings are Magnetic. Elevations in FEET AMSL
---------------------	--------------	--------------	--------------	---



**ARRIVAL: WAREN EIGHT MIKE**

**Cross** WAREN AT or ABV 10,000ft, then:

**RWY 16:**

- From WAREN track 319° to MICHM
- Turn RIGHT, track 321° to MONTY  
**Cross** MONTY AT or ABV 7000ft
- Turn RIGHT, track 323° to DUGOT  
**Cross** DUGOT AT or ABV 5000ft  
**IAS AT 230KT** from DUGOT
- Track 323° to VENPU  
**Cross** VENPU AT or BLW 8000ft
- Turn LEFT, track 307° to LUVKA
- Turn LEFT, track via RNP M RWY 16 (AR)

**COMMUNICATIONS FAILURE: PROCEDURE IN IMC**

- Squawk 7600, comply with vertical navigation requirements, but not below MSA.
- Track via the latest STAR clearance to the nominated runway, then fly the most suitable approach in accordance with ERS A EMERG Section 1.5.

Changes: VAR, Editorial.

MMLSR13-178