

**STANDARD INSTRUMENT ARRIVAL (STAR)  
ARBEY SEVEN ALPHA ARRIVAL (RNAV) RWY 09/16  
MELBOURNE, VIC (YMML)**

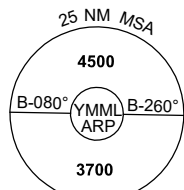
21 MAR 2024

ATIS 114.1 118.0	APP/DEP 118.9 132.0	TWR 120.5	SMC 121.7	Bearings are Magnetic Elevations in FEET AMSL
---------------------	------------------------	--------------	--------------	--

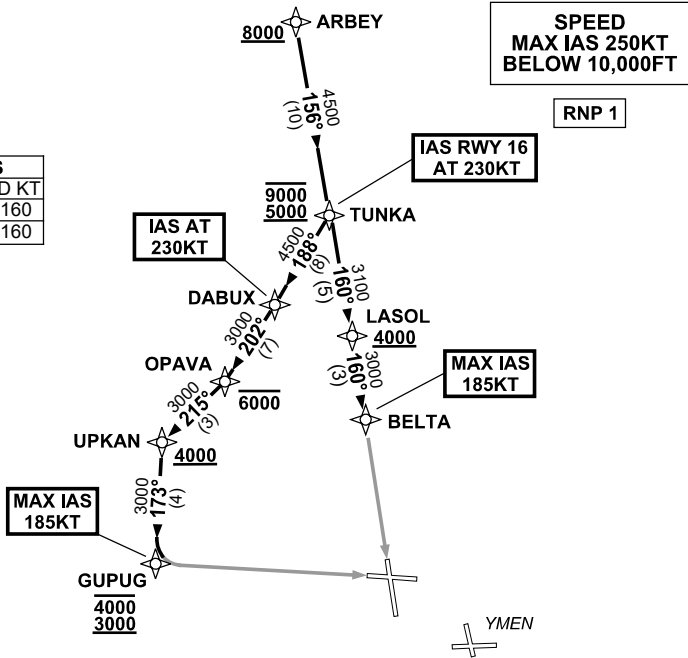
NOT TO SCALE



ATC APCH SPEEDS	
NM FM TD	SPEED KT
RWY 09 GUPUG	185 -160
RWY 16 BELTA	185 -160



10 NM MSA 3300



**ARRIVAL: ARBEY SEVEN ALPHA**

**Cross** ARBEY AT or ABV 8000ft

- From ARBEY track 156° to TUNKA, then:

**RWY 09:**

**Cross** TUNKA BTN 5000ft and 9000ft

- Turn RIGHT, track 188° to DABUX  
**IAS AT 230KT** from DABUX
- Turn RIGHT, track 202° to OPAVA  
**Cross** OPAVA AT or BLW 6000ft
- Turn RIGHT, track 215° to UPKAN  
**Cross** UPKAN AT or ABV 4000ft
- Turn LEFT, track 173° to GUPUG  
**Cross** GUPUG BTN 3000ft and 4000ft  
MAX IAS 185KT from GUPUG
- Track via GLS RWY 09 or RNP RWY 09

**RWY 16:**

**Cross** TUNKA BTN 5000ft and 9000ft

- **IAS AT 230KT** from TUNKA
- Track 160° to LASOL  
**Cross** LASOL AT or ABV 4000ft
- Track 160° to BELTA  
MAX IAS 185KT from BELTA
- Track via GLS RWY 16 or ILS RWY 16 or RNP Z RWY 16 or LOC RWY 16

**COMMUNICATIONS FAILURE: PROCEDURE IN IMC**

- Squawk 7600, comply with vertical navigation requirements, but not below MSA.
- Track via the latest STAR clearance to the nominated runway, then fly the most suitable approach in accordance with ERSA EMERG Section 1.5.

Changes: VAR.

MMLSR11-178