

**STANDARD INSTRUMENT ARRIVAL (STAR)
LIZZI NINE VICTOR ARRIVAL (RNAV)
MELBOURNE, VIC (YMML)**

21 MAR 2024

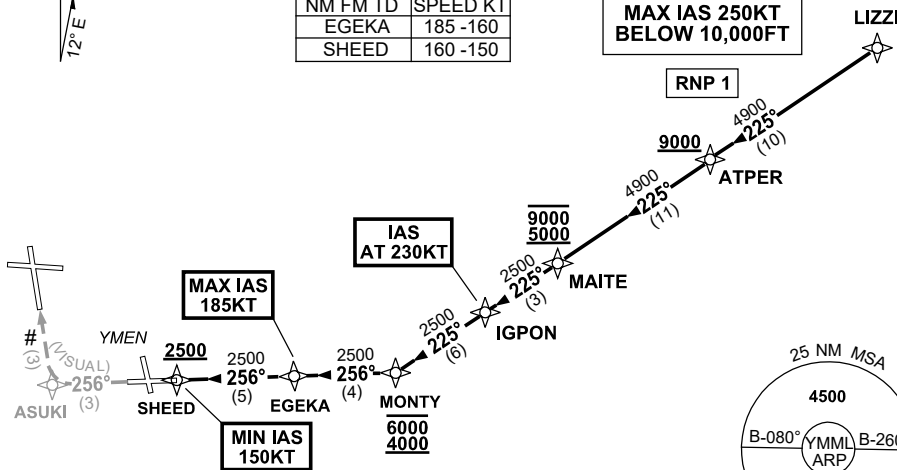
ATIS 114.1 118.0	APP 132.0	TWR 120.5	SMC 121.7	Bearings are Magnetic Elevations in FEET AMSL
---------------------	--------------	--------------	--------------	--

NOT TO SCALE



ATC APCH SPEEDS		
NM	FM TD	SPEED KT
EGEKA	185 -160	
SHEED	160 -150	

**SPEED
MAX IAS 250KT
BELOW 10,000FT**



CAUTION: RWY 34 is indicated by Runway
Threshold Identification Lights,
Essendon Airport 5NM SE of ML.

10 NM MSA 3300

ARRIVAL: LIZZI NINE VICTOR

RWY 34 :

- From LIZZI track 225° to ATPER
Cross ATPER AT or ABV 9000ft
- Track 225° to MAITE
Cross MAITE BTN 5000ft and 9000ft
- Track 225° to IGPON
IAS AT 230KT from IGPON
- Track 225° to MONTY
Cross MONTY BTN 4000ft and 6000ft
- Turn RIGHT, track 256° to EGEKA
MAX IAS 185KT from EGEKA
- Track 256° to SHEED
Cross SHEED AT or ABV 2500ft
MIN IAS 150KT from SHEED
- Track 256° VISUAL to ASUKI
- Turn RIGHT for VISUAL intercept
of final RWY 34

COMMUNICATIONS FAILURE: PROCEDURE IN IMC

- Squawk 7600, comply with vertical navigation requirements, but not below MSA.
- Track via the latest STAR clearance to the nominated runway, then fly the most suitable approach in accordance with ERSA EMERG Section 1.5.