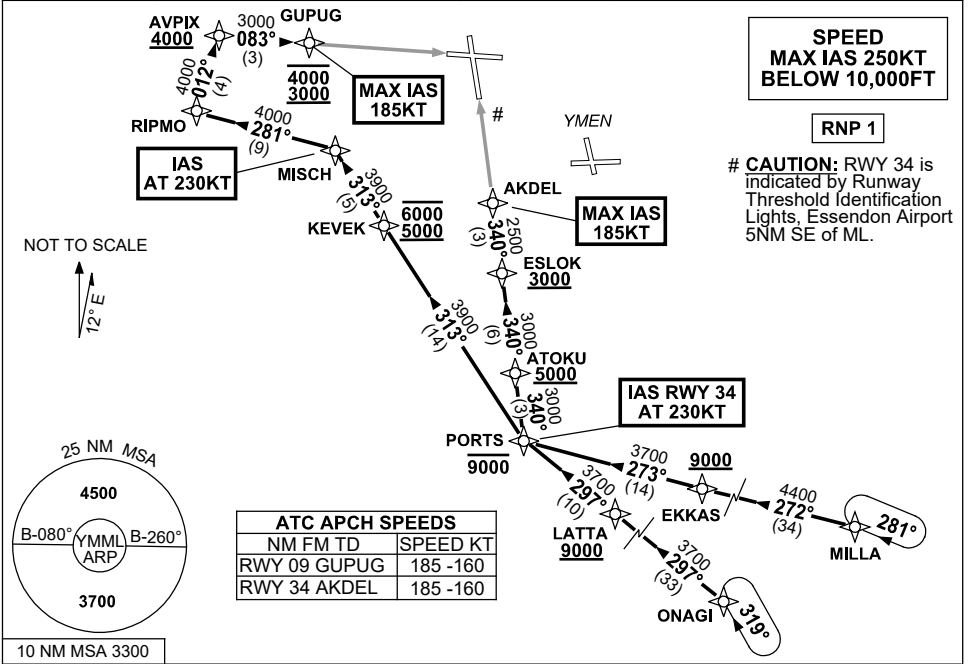


**STANDARD INSTRUMENT ARRIVAL (STAR)  
PORTS SEVEN ALPHA ARRIVAL (RNAV)  
MELBOURNE, VIC (YMML)**

21 MAR 2024

ATIS 114.1 118.0	APP/DEP 129.4	TWR 120.5	SMC 121.7	Bearings are Magnetic Elevations in FEET AMSL
---------------------	------------------	--------------	--------------	--------------------------------------------------



**TRANSITIONS:**

**MILLA:** From MILLA to PORTS:

- Track 272° to EKKAS  
    **Cross** EKKAS AT or ABV 9000ft
- Track 273° to PORTS  
    **Cross** PORTS AT or BLW 9000ft
- Then follow ARRIVAL instruction

**ONAGI:** From ONAGI to PORTS:

- Track 297° to LATTA  
    **Cross** LATTA AT or ABV 9000ft
- Track 297° to PORTS  
    **Cross** PORTS AT or BLW 9000ft
- Then follow ARRIVAL instruction

**ARRIVAL: PORTS SEVEN ALPHA**

**RWY 09:** From PORTS:

- Turn RIGHT, track 313° to KEVEK  
    **Cross** KEVEK BTN 5000ft and 6000ft
- Track 313° to MISCH  
    **IAS AT 230KT** from MISCH
- Turn LEFT, track 281° to RIPMO
- Turn RIGHT, track 012° to AVPIX  
    **Cross** AVPIX AT or ABV 4000ft
- Turn RIGHT, track 083° to GUPUG  
    **Cross** GUPUG BTN 3000ft and 4000ft  
    **MAX IAS 185KT** from GUPUG
- Track via GLS RWY 09 or RNP RWY 09

**RWY 34:** From PORTS:

- **IAS AT 230KT** from PORTS
- Turn RIGHT, track 340° to ATOKU  
    **Cross** ATOKU AT or ABV 5000ft
- Track 340° to ESLOK  
    **Cross** ESLOK AT or ABV 3000ft
- Track 340° to AKDEL  
    **MAX IAS 185KT** from AKDEL
- Track via GLS RWY 34 or RNP RWY 34

**COMMUNICATIONS FAILURE: PROCEDURE IN IMC**

- Squawk 7600, comply with vertical navigation requirements, but not below MSA.
- Track via the latest STAR clearance to the nominated runway, then fly the most suitable approach in accordance with ERSA EMERG Section 1.5.

Changes: VAR, Editorial.

MMLSR03-178