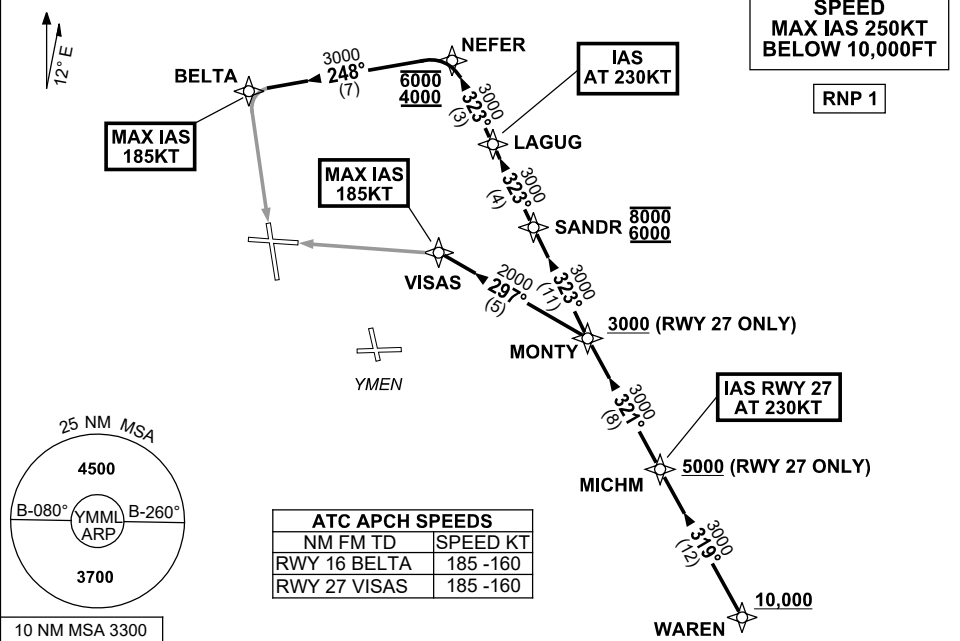


**STANDARD INSTRUMENT ARRIVAL (STAR)
WAREN EIGHT ALPHA ARRIVAL (RNAV) RWY 16/27
MELBOURNE, VIC (YMML)**

21 MAR 2024

ATIS 114.1 118.0	APP 132.0	TWR 120.5	SMC 121.7	Bearings are Magnetic Elevations in FEET AMSL
---------------------	--------------	--------------	--------------	--

NOT TO SCALE



ARRIVAL: WAREN EIGHT ALPHA

Cross WAREN AT or ABV 10,000ft, then:

RWY 16:

- From WAREN, track 319° to MICHM
- Turn RIGHT, track 321° to MONTY
- Turn RIGHT, track 323° to SANDR
Cross SANDR BTN 6000ft and 8000ft
- Track 323° to LAGUG
IAS AT 230KT from LAGUG
- Track 323° to NEFER
Cross NEFER BTN 4000ft and 6000ft
- Turn LEFT, track 248° to BELTA
MAX IAS 185KT from BELTA
- Track via GLS RWY 16 or ILS RWY 16 or RNP Z RWY 16 or LOC RWY 16

RWY 27:

- From WAREN track 319° to MICHM
Cross MICHM AT or ABV 5000ft
IAS AT 230KT from MICHM
- Track 321° to MONTY
Cross MONTY AT or ABV 3000ft
- Turn LEFT, track 297° to VISAS
MAX IAS 185KT from VISAS
- Track via GLS RWY 27 or ILS RWY 27 or RNP RWY 27 or LOC RWY 27

COMMUNICATIONS FAILURE: PROCEDURE IN IMC

- Squawk 7600, comply with vertical navigation requirements, but not below MSA.
- Track via the latest STAR clearance to the nominated runway, then fly the most suitable approach in accordance with ERSA EMERG Section 1.5.

Changes: VAR, Editorial.

MMLSR02-178