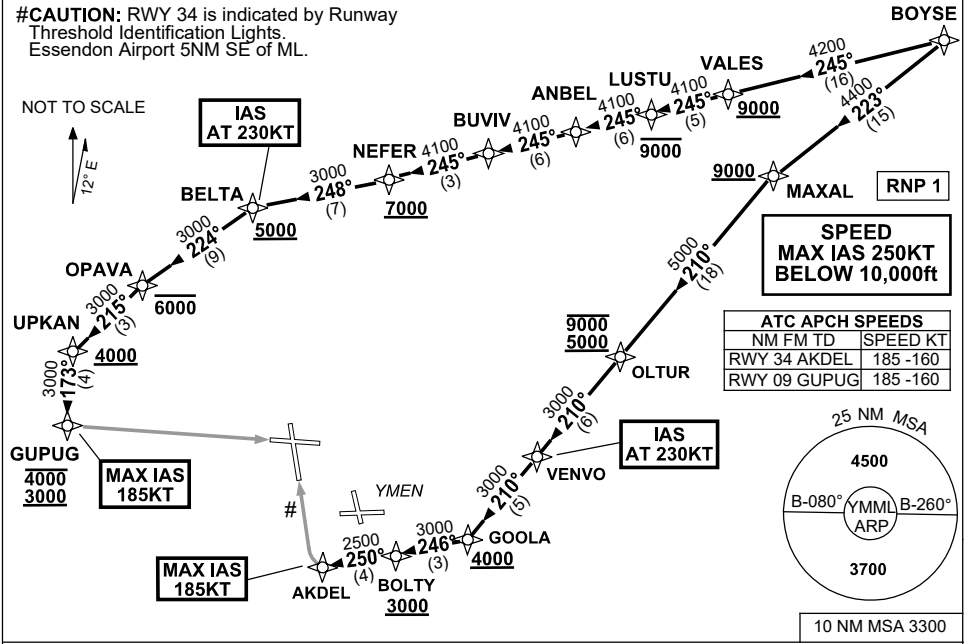


**STANDARD INSTRUMENT ARRIVAL (STAR)
BOYSE EIGHT ALPHA ARRIVAL (NON-JET)(RNAV) RWY 09/34
MELBOURNE, VIC (YMML)**

21 MAR 2024

ATIS 114.1 118.0	APP 132.0	TWR 120.5	SMC 121.7	Bearings are Magnetic Elevations in FEET AMSL
---------------------	--------------	--------------	--------------	--



- ARRIVAL: BOYSE EIGHT ALPHA (NON-JET)**
- RWY 09:**
- From BOYSE track 245° to VALES
Cross VALES AT or ABV 9000ft
 - Track 245° to LUSTU
Cross LUSTU AT or BLW 9000ft
 - Track 245° to ANBEL
 - Track 245° to BUVIV
 - Track 245° to NEFER
Cross NEFER AT or ABV 7000ft
 - Turn RIGHT, track 248° to BELTA
Cross BELTA AT or ABV 5000ft
IAS AT 230KT from BELTA
 - Turn LEFT, track 224° to OPAVA
Cross OPAVA AT or BLW 6000ft
 - Turn LEFT, track 215° to UPKAN
Cross UPKAN AT or ABV 4000ft
 - Turn LEFT, track 173° to GUPUG
Cross GUPUG BTN 3000ft and 4000ft
MAX IAS 185KT from GUPUG
 - Track via GLS RWY 09 or RNP RWY 09
- RWY 34:**
- From BOYSE track 223° to MAXAL
Cross MAXAL AT or ABV 9000ft
 - Turn LEFT, track 210° to OLTUR
Cross OLTUR BTN 5000ft and 9000ft
 - Track 210° to VENVO
IAS AT 230KT from VENVO
 - Track 210° to GOOLA
Cross GOOLA AT or ABV 4000ft
 - Turn RIGHT, track 246° to BOLTY
Cross BOLTY AT or ABV 3000ft
 - Turn RIGHT, track 250° to AKDEL
MAX IAS 185KT from AKDEL
 - Track via GLS RWY 34 or RNP RWY 34

COMMUNICATIONS FAILURE: PROCEDURE IN IMC

- Squawk 7600, comply with vertical navigation requirements, but not below MSA.
- Track via the latest STAR clearance to the nominated runway, then fly the most suitable approach in accordance with ERSA EMERG Section 1.5.

Changes: VAR.

MMLSR01-178