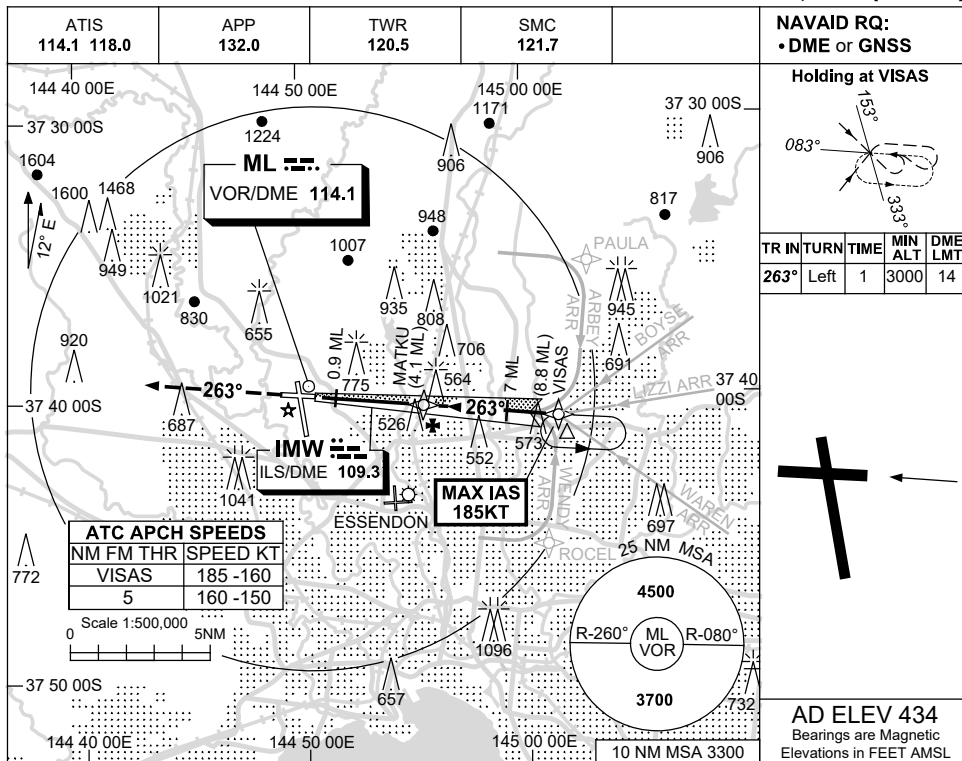


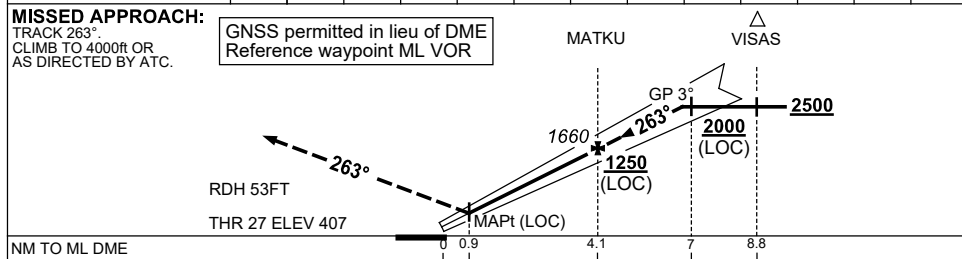
USE QNH

ILS-Y or LOC-Y RWY 27
MELBOURNE, VIC (YMML)

21 MAR 2024



NM TO ML DME	1.6	2	3	4.1	5	6	6.7				
ALT (3° APCH PATH)	880	1000	1320	1660	1960	2270	2500				



NOTES

CATEGORY	A	B	C	D
S-I ILS		610 (203) 0.8	550 RVR	
S-I LOC		880 (473-1.9)		
CIRCLING	1140 (706-2.4)	1450 (1016-4.0)	1600 (1166-5.0)	
ALTERNATE*	(1206-4.4)	(1516-6.0)	(1666-7.0)	

1. MAX IAS:
 VISAS : 185KT.
2. SPECIAL ALTN MNM
 700/2.5 KM.

Changes: VAR.

MMLII05-178