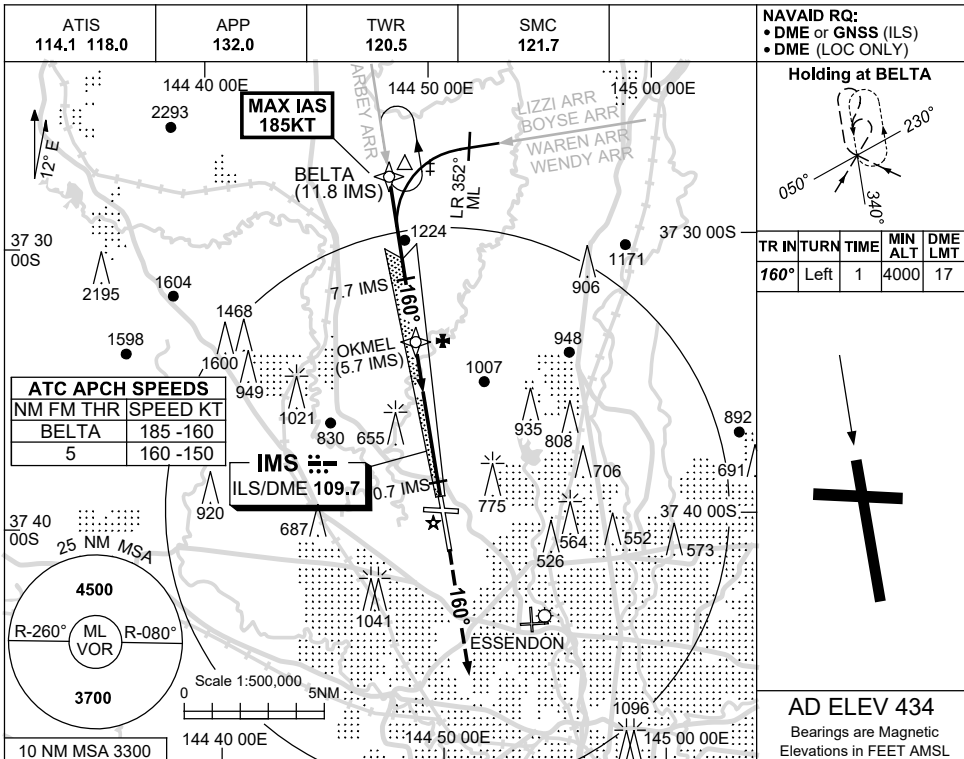
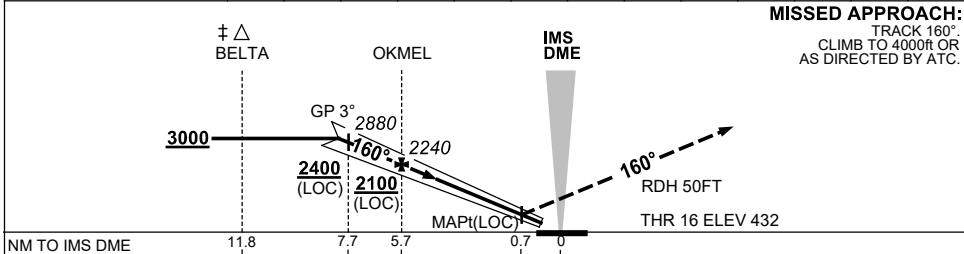


21 MAR 2024



NM TO IMS DME	8.1	7.7	7	5.7	5	4	3	2.3				
ALT (3° APCH PATH)	3000	2880	2650	2240	2010	1690	1370	1140				



**NOTES**

1. MAX IAS :  
 BELTA : 185KT.
- \* 2. SPECIAL ALT MNM  
 700/2.5 KM. (NOT APP.  
 LICABLE TO LOC/DME).
- ‡ 3. ACFT MAY BE  
 RADAR VECTORED  
 TO FNA OR JOIN  
 PROCEDURE OFF  
 STAR PRIOR TO FAF.

CATEGORY	A	B	C	D
S-I ILS		<b>640</b> (208) 0.8	550 RVR	
S-I LOC		<b>1140</b> (706-3.1)		
CIRCLING	<b>1140</b> (706-2.4)		<b>1450</b> (1016-4.0)	<b>1600</b> (1166-5.0)
ALTERNATE‡	(1206-4.4)		(1516-6.0)	(1666-7.0)

Changes: VAR.

MMLII03-178