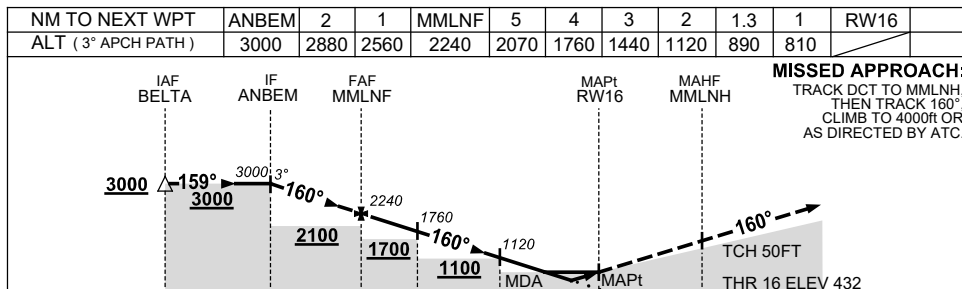
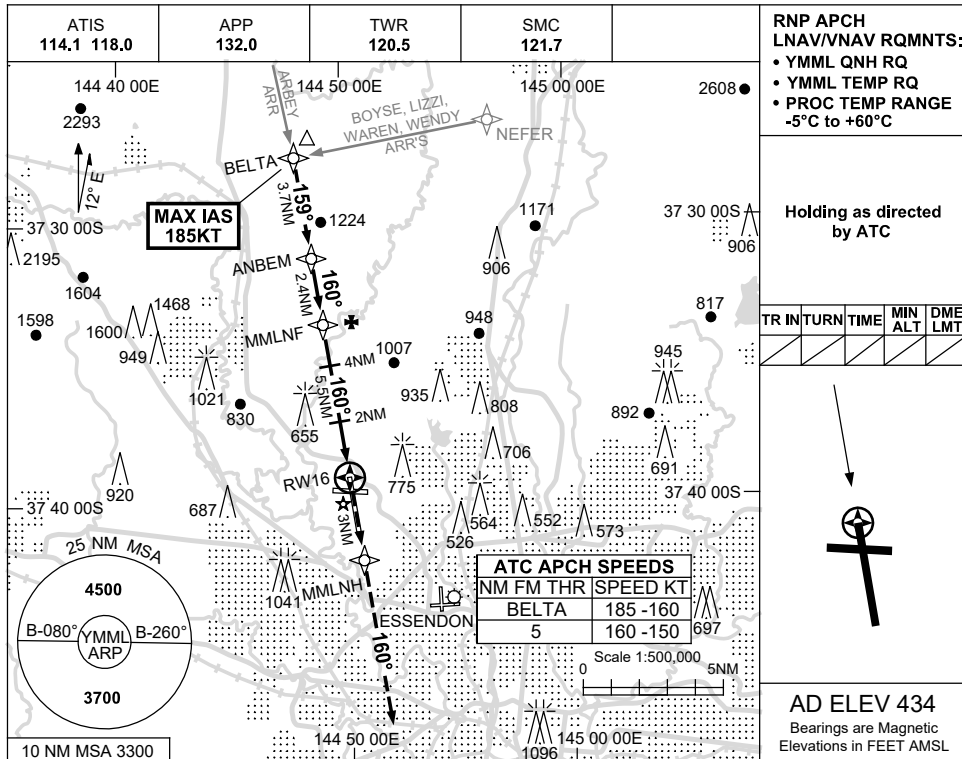


USE QNH

RNP Z RWY 16

21 MAR 2024

MELBOURNE, VIC (YMML)



NOTES

CATEGORY	A	B	C	D
LNAV/VNAV		810 (378-1.2)		
LNAV		890 (456-1.7)		
CIRCLING	1140 (706-2.4)		1450 (1016-4.0)	1600 (1166-5.0)
ALTERNATE	(1206-4.4)		(1516-6.0)	(1666-7.0)

1. MAX IAS:
BELTA : 185KT.

Changes: VAR, Editorial.

MMLGN03-178