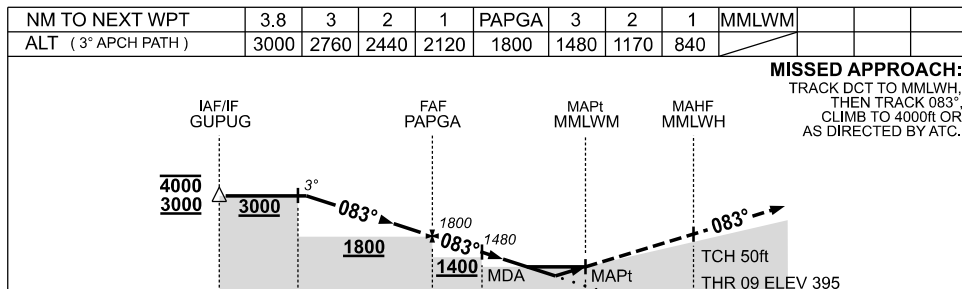
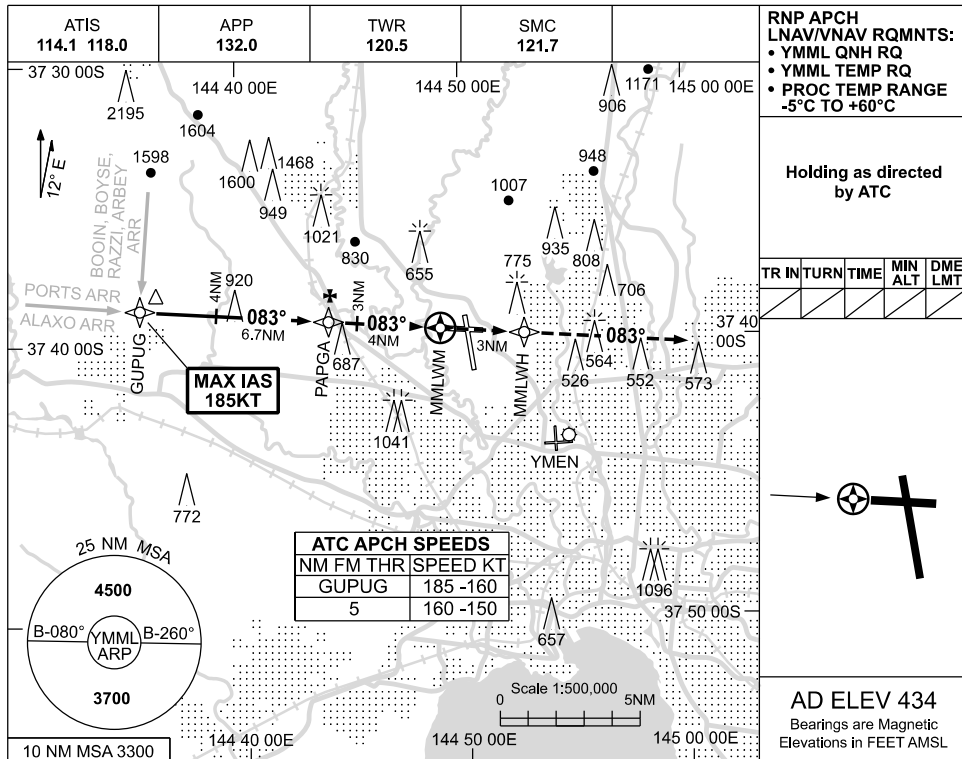


USE QNH

RNP RWY 09

MELBOURNE, VIC (YMML)

19 MAR 2026



CATEGORY	A	B	C	D
LNAV/VNAV		760 (365-2.0)		
LNAV		840 (445-2.5)		
CIRCLING	1140 (706-2.4)	1450 (1016-4.0)		1600 (1166-5.0)
ALTERNATE	(1206-4.4)	(1516-6.0)		(1666-7.0)

**NOTES**  
1. MAX IAS:  
GUPUG : 185KT.

Changes: ABN DELETED, Editorial.

MMLGN02-186