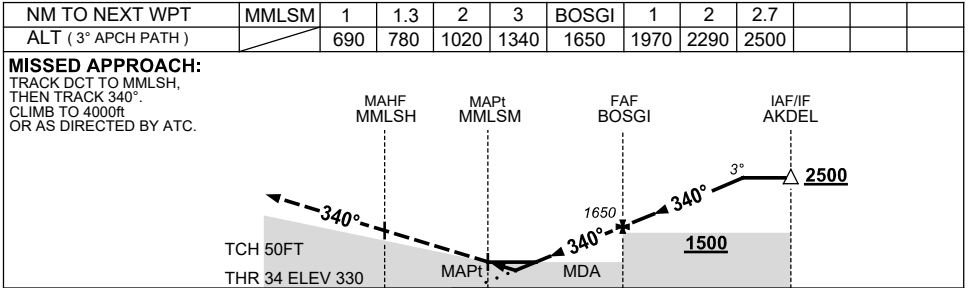
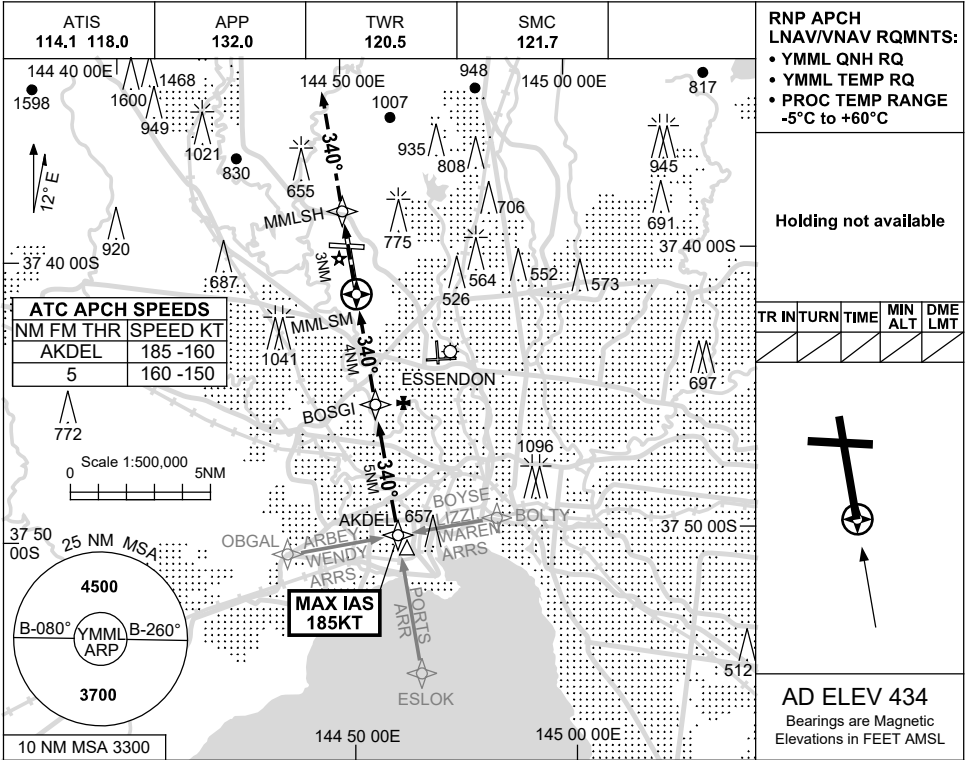


USE QNH

RNP RWY 34

MELBOURNE, VIC (YMML)

21 MAR 2024



NM TO MMLSM

NOTES

CATEGORY	A	B	C	D
LNAV/VNAV		690 (360-2.0)		
LNAV		780 (450-2.5)		
CIRCLING	1140 (706-2.4)		1450 (1016-4.0)	1600 (1166-5.0)
ALTERNATE	(1206-4.4)		(1516-6.0)	(1666-7.0)

1. MAX IAS: AKDEL : 185KT.

Changes: VAR, Editorial.

MMLGN01-178