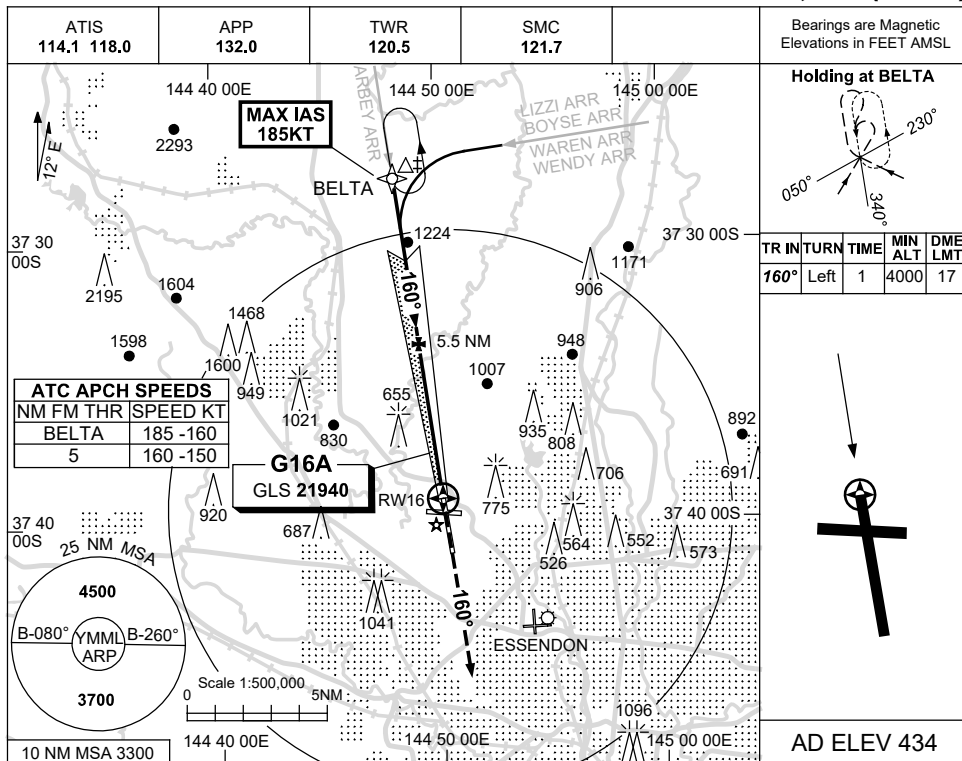


USE QNH

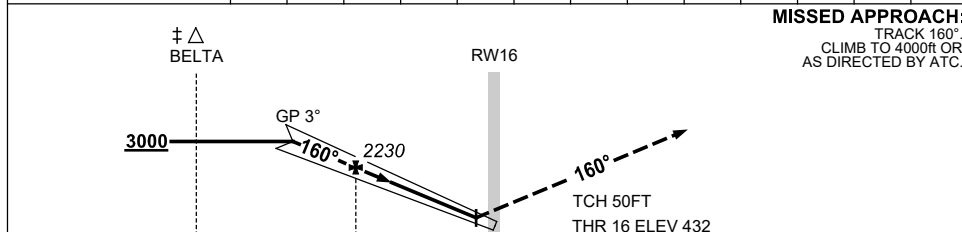
GLS RWY 16

21 MAR 2024

MELBOURNE, VIC (YMML)



NM TO RW16	7.9	7	6	5	4	3	2	1	0.5			
ALT (3° APCH PATH)	3000	2710	2390	2070	1760	1440	1120	800	640			



MISSED APPROACH:
 TRACK 160°
 CLIMB TO 4000ft OR
 AS DIRECTED BY ATC.

NOTES

CATEGORY	A	B	C	D
S-I GLS	640 (208) 0.8 550 RVR			
CIRCLING	1140 (706-2.4)	1450 (1016-4.0)	1600 (1166-5.0)	
ALTERNATE	(1206-4.4)	(1516-6.0)	(1666-7.0)	

1. MAX IAS :
 BELTA : 185KT.
- ± 2. ACFT MAY BE
 RADAR VECTORED
 TO FNA OR JOIN
 PROCEDURE OFF
 STAR PRIOR TO
 FAF.

Changes: VAR.

MMLGL05-178