

STANDARD INSTRUMENT DEPARTURES (SID)
NEVIS SEVEN (JET)(RNAV)
MELBOURNE, VIC (YMML)

21 MAR 2024

ATIS 114.1 118.0	ACD 127.2	SMC 121.7	TWR 120.5	DEP 118.9
---------------------	--------------	--------------	--------------	--------------

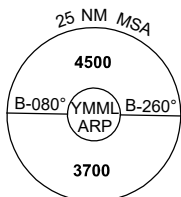
NOT TO SCALE



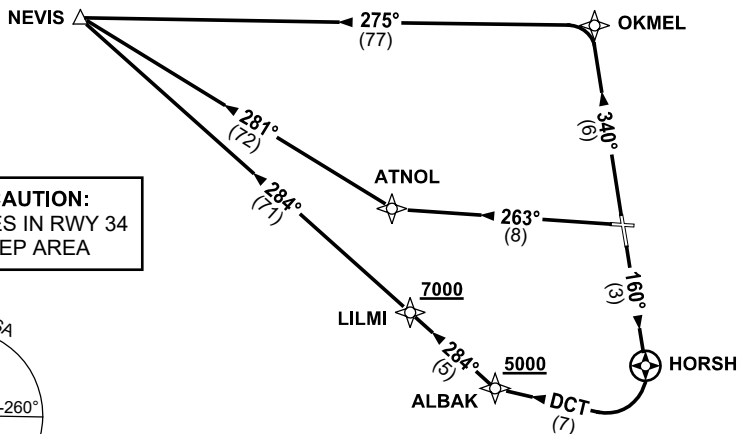
**SPEED
MAX IAS 250KT
BELOW 10,000ft**

RNP 1

**CAUTION:
TREES IN RWY 34
DEP AREA**



10 NM MSA 3300



NEVIS SEVEN DEPARTURE

RWY 16

- GRAD 3.3%
- Track 160° to HORSH
- Turn RIGHT, track DCT to ALBAK
Cross ALBAK AT or ABV 5000ft
(RQ GRAD TO ALBAK 8.5%)
- Turn RIGHT, track 284° to LILMI
Cross LILMI AT or ABV 7000ft
(RQ GRAD TO LILMI 7.4%)
- Track 284° to NEVIS, then as cleared

RWY 27

- GRAD 3.3%
- Track 263° to ATNOL
- Turn RIGHT, track 281° to NEVIS,
then as cleared

RWY 34

- GRAD 3.5% to 1200ft then 3.3%
- Track 340° to OKMEL
- Turn LEFT, track 275° to NEVIS,
then as cleared

Changes: VAR, Editorial.

MMLDP32-178