

STANDARD INSTRUMENT DEPARTURES (SID)
RWYS WEST (JET)(RNAV)
MELBOURNE, VIC (YMML)

24 MAR 2022

ATIS 114.1 118.0	ACD 127.2	SMC 121.7	TWR 120.5	DEP 129.4
---------------------	--------------	--------------	--------------	--------------

NOT TO SCALE

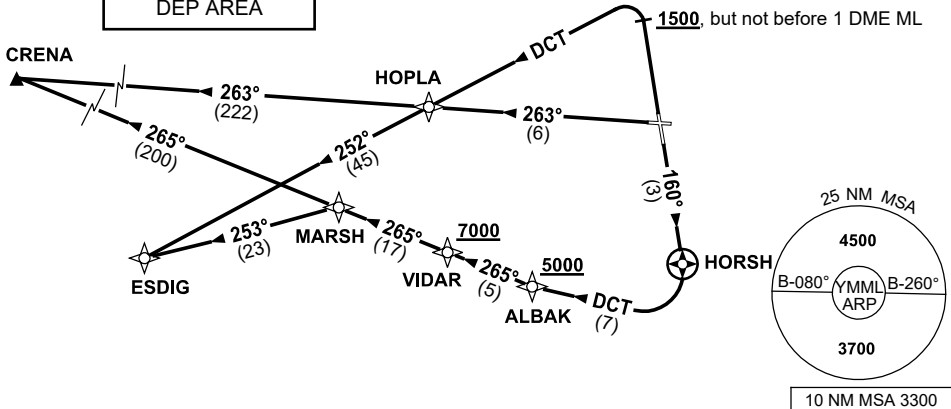


GNSS permitted in lieu of DME
Reference waypoint ML VOR

**SPEED
MAX IAS 250KT
BELOW 10,000ft**

RNP 1

**CAUTION:
TREES IN RWY 34
DEP AREA**



**CRENA ONE DEPARTURE
ESDIG THREE DEPARTURE**

RWY 16

- GRAD 3.3%
- Track 160° to HORSH
- At HORSH turn RIGHT
- Track DCT to ALBAK
Cross ALBAK AT or ABV 5000ft
(RQ GRAD TO ALBAK 8.5%)
- Track 265° to VIDAR
Cross VIDAR AT or ABV 7000ft
(RQ GRAD TO VIDAR 6.6%)
- Track 265° to MARSH

FOR ESDIG

- From MARSH turn LEFT,
- Track 253° to ESDIG, thence as cleared

FOR CRENA

- Track 265° to CRENA, thence as cleared

RWY 27

- GRAD 3.3%
- Track 263° to HOPLA

FOR ESDIG

- From HOPLA turn LEFT
- Track 252° to ESDIG, thence as cleared

FOR CRENA

- From HOPLA track 263° to CRENA, thence as cleared

RWY 34

- GRAD 3.5% to 1200ft then 3.3%
- Track 340°

FOR ESDIG

- AT or ABV 1500ft, but not before 1 DME ML turn LEFT track DCT to HOPLA
- From HOPLA track 252° to ESDIG, thence as cleared

FOR CRENA

- AT or ABV 1500ft, but not before 1 DME ML turn LEFT track DCT to HOPLA
- From HOPLA turn RIGHT track 263° to CRENA, thence as cleared

Changes: CAUTION NOTE, Editorial.

MMLDP07-170