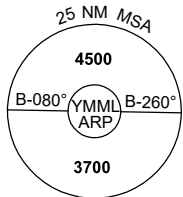
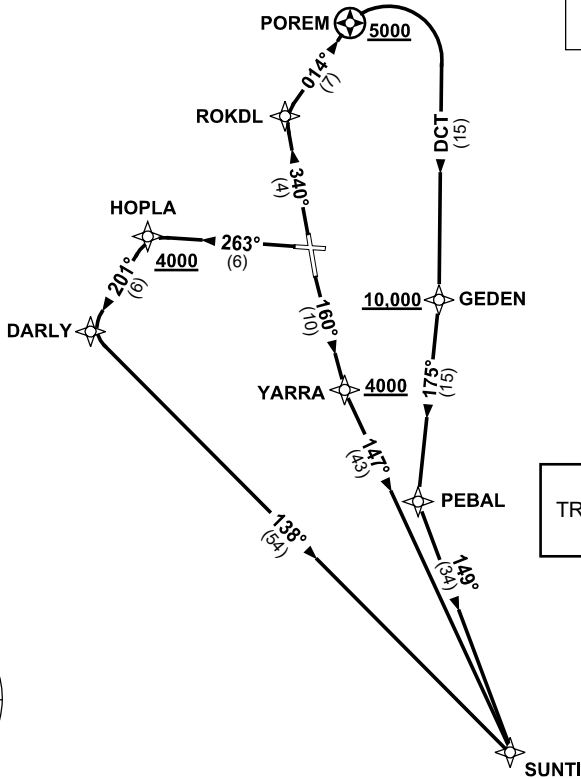


STANDARD INSTRUMENT DEPARTURES (SID)  
SUNTI THREE (JET)(RNAV)  
MELBOURNE, VIC (YMML)

21 MAR 2024

ATIS 114.1 118.0	ACD 127.2	SMC 121.7	TWR 120.5	DEP 129.4 EXC RWY 34 SUNTI 118.9
---------------------	--------------	--------------	--------------	-------------------------------------

NOT TO SCALE



10 NM MSA 3300

**SUNTI THREE DEPARTURE**

**RWY 16**

- GRAD 3.3%
- Track 160° to YARRA  
Cross YARRA AT or ABV 4000ft (RQ GRAD TO YARRA: 6.5%)
- Turn LEFT, track 147° to SUNTI, then as cleared

**RWY 27**

- GRAD 3.3%
- Track 263° to HOPLA  
Cross HOPLA AT or ABV 4000ft (RQ GRAD TO HOPLA: 9.9%)
- Turn LEFT track 201° to DARLY
- Turn LEFT track 138° to SUNTI, then as cleared

**RWY 34**

- GRAD 4.6% to 1500ft then 3.3%
- Track 340° to ROKDL
- Turn RIGHT, track 014° to POREM  
Cross POREM AT or ABV 5000ft (RQ GRAD TO POREM: 7.1%)
- Turn RIGHT, track DCT to GEDEN  
Cross GEDEN AT or ABV 10,000ft (RQ GRAD TO GEDEN: 6.2%)
- Track 175° to PEBAL
- Turn LEFT, track 149° to SUNTI, then as cleared

Changes: VAR, Editorial.

MMLDP05-178