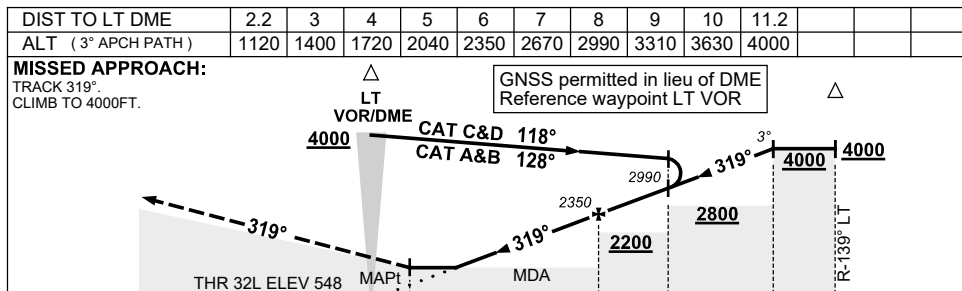
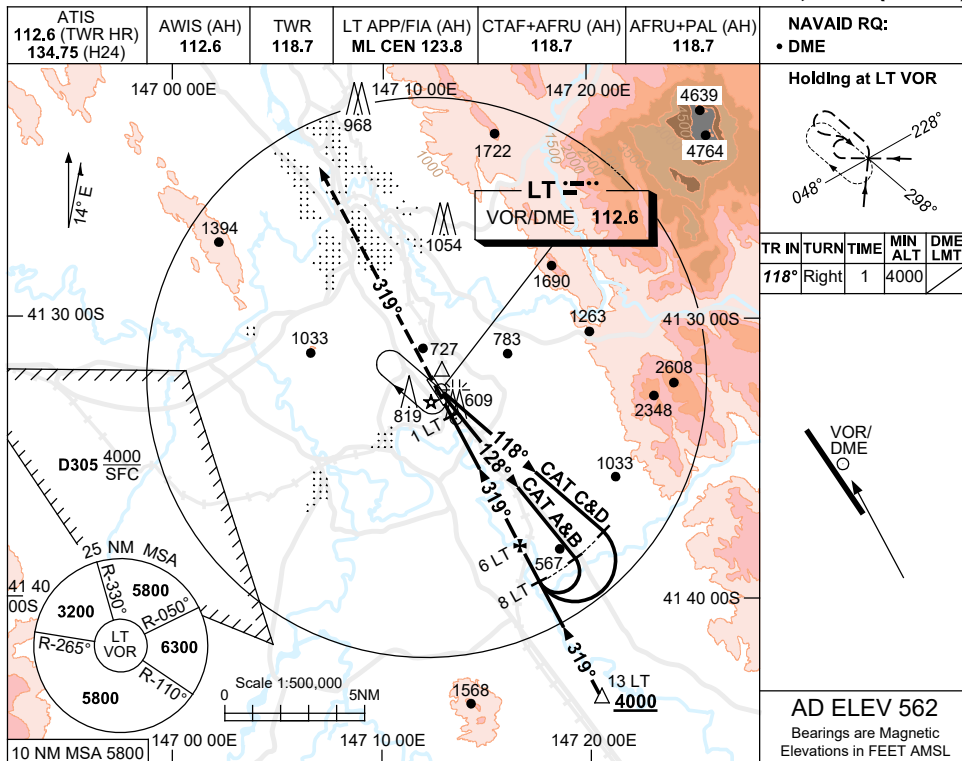


USE QNH

VOR RWY 32L

**LAUNCESTON, TAS (YMLT)**

1 DEC 2022



NM TO LT DME

<b>CATEGORY</b>	<b>A</b>	<b>B</b>	<b>C</b>	<b>D</b>
S-I VOR/DME	1120 (572-2.3)			
CIRCLING	1440 (878-2.4)		1670 (1108-4.0) 1670 (1108-5.0)	
ALTERNATE*	(1378-4.4)		(1608-6.0) (1608-7.0)	

**NOTES**

1. MAX IAS:  
BASE TURN: 210KT.
2. SPECIAL ALTN MNM 1000/5.0KM.
3. HLDG & REVERSAL NOT CONTAINED IN CTA.
4. COLOUR: SEE SPEC NOTICES.

Changes: FROM SUP H37/22.

MLTVO02-173