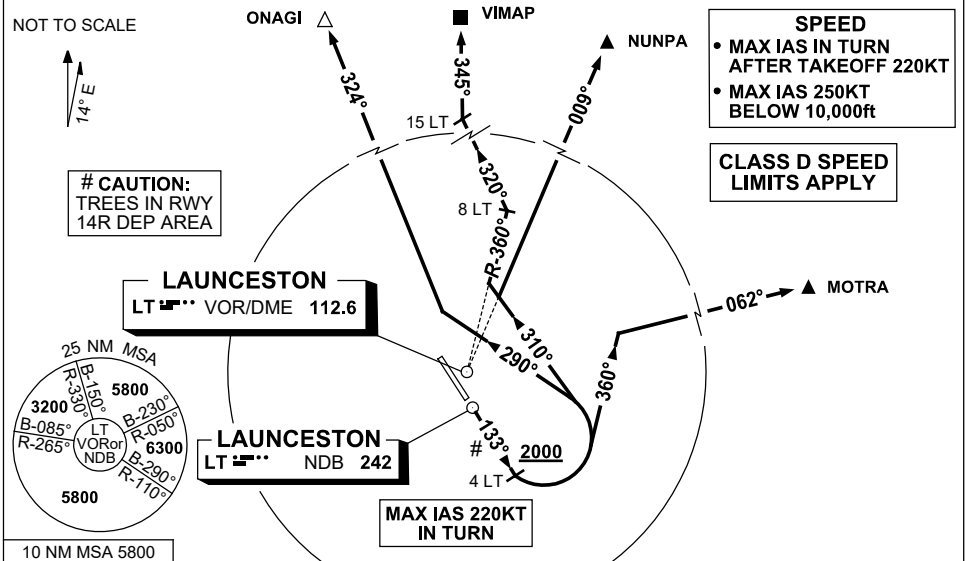


**STANDARD INSTRUMENT DEPARTURES (SID)  
RWY 14R NORTH BRAVO  
LAUNCESTON TAS (YMLT)**

**30 NOV 2023**

ATIS 112.6 (TWR HR) 134.75 (H24)	AWIS (AH) 112.6	TWR 118.7	LT APP/FIA (AH) ML CEN 123.8	CTAF+AFRU (AH) 118.7	AFRU+PAL (AH) 118.7	Bearings are Magnetic Elevations in FEET AMSL
--	--------------------	--------------	---------------------------------	-------------------------	------------------------	--



NUNPA	TWO	BRAVO	DEPARTURE
VIMAP	ONE	BRAVO	DEPARTURE
MOTRA	TWO	BRAVO	DEPARTURE
ONAGI	TWO	BRAVO	DEPARTURE

**RWY 14R**

- GRAD 4.6% to 6300ft then 3.3%
  - Track 133°
- (MAX IAS 220KT IN TURN)**

**FOR MOTRA**

- AT or ABV 2000ft, but not before 4 DME LT, turn LEFT, track 360°
- Intercept route as cleared

**FOR NUNPA**

- AT or ABV 2000ft, but not before 4 DME LT, turn LEFT, track 310°
- Intercept route as cleared

**FOR VIMAP**

- AT or ABV 2000ft, but not before 4 DME LT, turn LEFT, track 310°
- Intercept LT R-360°
- AT 8 DME LT, turn LEFT, track 320°
- Intercept route as cleared by 15 DME LT

**FOR ONAGI**

- AT or ABV 2000ft, but not before 4 DME LT, turn LEFT, track 290°
- Intercept route as cleared

Changes: VIMAP REPLACES NOLAN, FROM SUP H40/23.

MLTDP05-117