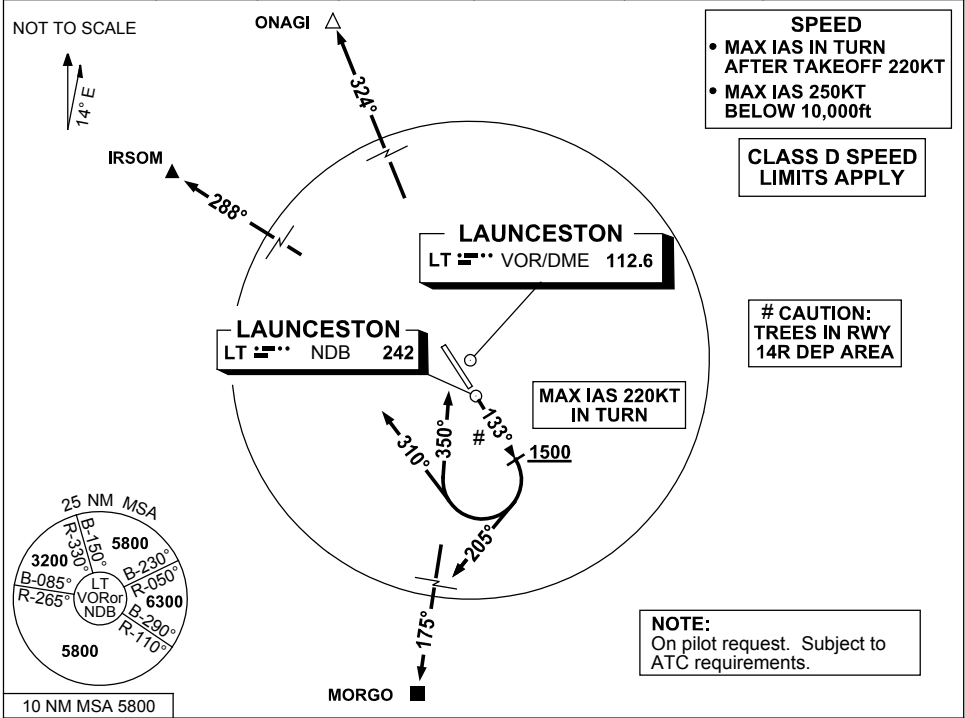


**STANDARD INSTRUMENT DEPARTURES (SID)
RWY 14R CHARLIE (NON-JET)
LAUNCESTON TAS (YMLT)**

30 NOV 2023

ATIS 112.6 (TWR HR) 134.75 (H24)	AWIS (AH) 112.6	TWR 118.7	LT APP/FIA (AH) ML CEN 123.8	CTAF+AFRU (AH) 118.7	AFRU+PAL (AH) 118.7	Bearings are Magnetic Elevations in FEET AMSL
--	--------------------	--------------	---------------------------------	-------------------------	------------------------	--



SPEED

- MAX IAS IN TURN AFTER TAKEOFF 220KT
- MAX IAS 250KT BELOW 10,000ft

CLASS D SPEED LIMITS APPLY

CAUTION: TREES IN RWY 14R DEP AREA

NOTE:
On pilot request. Subject to ATC requirements.

10 NM MSA 5800

IRSOM TWO CHARLIE DEPARTURE MORG0 TWO CHARLIE DEPARTURE
ONAGI TWO CHARLIE DEPARTURE

- RWY 14R**
- Track 133°
(MAX IAS 220KT IN TURN)
- FOR IRSOM**
- GRAD 3.3%
 - AT or ABV 1500ft turn RIGHT track 310°
 - Intercept route as cleared
- FOR ONAGI**
- GRAD 3.3%
 - AT or ABV 1500ft turn RIGHT track 350°
 - Intercept route as cleared by 5 DME North of LT
- FOR MORG0**
- GRAD 4% TO 2100ft then 3.3%
 - AT OR ABV 1500ft turn RIGHT track 205°
 - Track 205°
 - Intercept route as cleared

Changes: FROM SUP H40/23.

MLTDP03-177