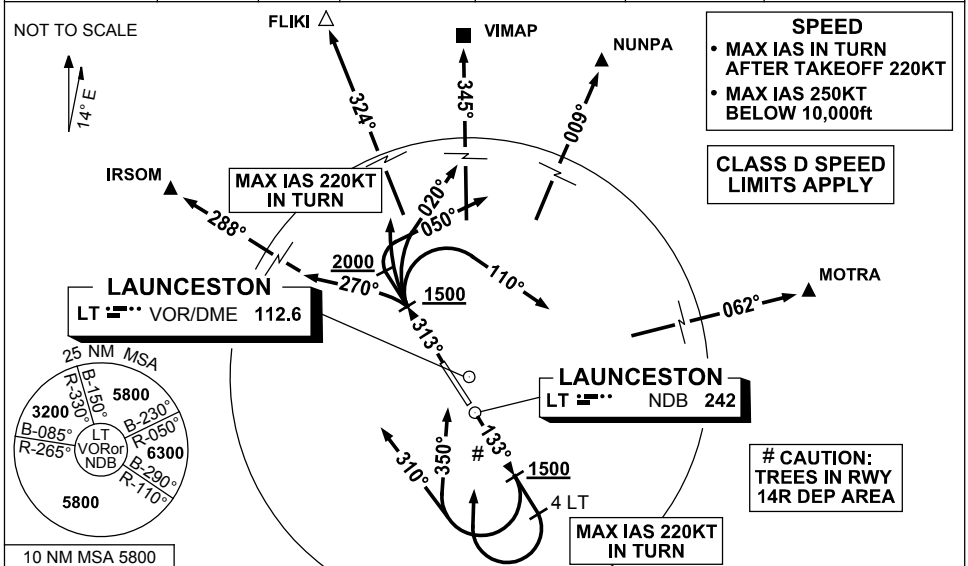


**STANDARD INSTRUMENT DEPARTURES (SID)  
RWY 14R/32L NORTH ALPHA  
LAUNCESTON TAS (YMLT)**

**28 NOV 2024**

ATIS 112.6 (TWR HR) 134.75 (H24)	AWIS (AH) 112.6	TWR 118.7	LT APP/FIA (AH) ML CEN 123.8	CTAF+AFRU (AH) 118.7	AFRU+PAL (AH) 118.7	Bearings are Magnetic Elevations in FEET AMSL
--	--------------------	--------------	---------------------------------	-------------------------	------------------------	--



**IRSOM TWO ALPHA DEPARTURE  
NUNPA TWO ALPHA DEPARTURE  
VIMAP ONE ALPHA DEPARTURE**

**MOTRA TWO ALPHA DEPARTURE  
FLIKI ONE ALPHA DEPARTURE**

**RWY 14R**

- GRAD 4.6% to 6300ft, then 3.3%
- Track 133°  
**(MAX IAS 220KT IN TURN)**

**FOR IRSOM**

- AT or ABV 1500ft turn RIGHT track 310°
- Intercept route as cleared

**FOR FLIKI**

- AT or ABV 1500ft turn RIGHT track 350°
- Intercept route as cleared by 5 DME North of LT

**FOR NUNPA, MOTRA and VIMAP**

- At 4 DME LT turn RIGHT track DCT to LT VOR or LT NDB
- After passing LT VOR or NDB intercept route as cleared

**RWY 32L**

- Track 313°  
**(MAX IAS 220KT IN TURN)**

**FOR IRSOM**

- GRAD 3.3%
- AT or ABV 1500ft turn LEFT track 270°
- Intercept route as cleared

**FOR FLIKI**

- GRAD 3.6% to 1500ft then 3.3%
- AT or ABV 1500ft turn RIGHT
- Intercept route as cleared

**FOR VIMAP**

- GRAD 4.3% to 3500ft then 3.3%
- AT or ABV 1500ft turn RIGHT track 020°
- Intercept route as cleared

**FOR NUNPA**

- GRAD 4.6% to 5000ft then 3.3%
- AT or ABV 2000ft turn RIGHT track 050°
- Intercept route as cleared

**FOR MOTRA**

- GRAD 4.3% to 5600ft then 3.3%
- AT or ABV 1500ft turn RIGHT track 110°
- Intercept route as cleared

Changes: FLIKI ONE ALPHA SID.

MLTDP01-181