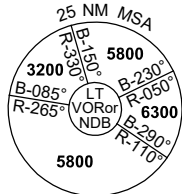


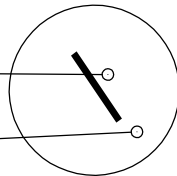
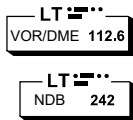
DME or GNSS ARRIVAL PROCEDURES LAUNCESTON, TAS (YMLT) Page 2

1 DEC 2022

ATIS 112.6 (TWR HR) 134.75 (H24)	AWIS (AH) 112.6	TWR 118.7	LT APP/FIA (AH) ML CEN 123.8	CTAF+AFRU (AH) 118.7	AFRU+PAL (AH) 118.7	Bearings are Magnetic Elevations in FEET AMSL
--	---------------------------	---------------------	--	--------------------------------	-------------------------------	--



**DME USING LT DME
REFERENCE WAYPOINT LT VOR**



10 NM MSA 5800

AD ELEV 562

SECTOR D
LT VOR or NDB

MISSED APPROACH:

TRACK 133° OUTBOUND FROM LT NDB OR LT VOR. CLIMB TO 3000FT. AT 7.7 LT AND AFTER PASSING 2500FT TURN RIGHT FOR 080°/260° PROC TURN. THENCE TRACK 313° FOR RWY 32L ILS. OR TRACK 313° TO LT VOR. CONTINUE CLIMB TO 4000FT.

NOTES:
1. MAX IAS:
MAPt TURN: 190KT.
PROC TURN: 210KT.

NM TO LT VOR	30	23	16	15	14	13	12	11	10	9	8	7	6	5	4	3.2
CIRCLING MINIMA	A,B: 1440-2.4			C: 1670-4.0			D: 1670-5.0									
NM TO LT VOR	16.9	16	15	14	13	12	11	10	9	8	7	6	5	4	3.2	
ALT (3° APCH PATH)	5800	5520	5200	4880	4570	4250	3930	3610	3290	2970	2660	2340	2020	1700	1440	

MOTRA TO LT
LT VOR or NDB

MISSED APPROACH:

TRACK 133° OUTBOUND FROM LT NDB OR LT VOR. CLIMB TO 3000FT. AT 7.7 LT AND AFTER PASSING 2500FT TURN RIGHT FOR 080°/260° PROC TURN. THENCE TRACK 313° FOR RWY 32L ILS. OR TRACK 313° TO LT VOR. CONTINUE CLIMB TO 4000FT.

NOTES:
1. MAX IAS:
MAPt TURN: 190KT.
PROC TURN: 210KT.

NM TO LT VOR	30	18	15	14	12	8	6	5	3	0	7.7				
CIRCLING MINIMA	A,B: 1440-2.4			C: 1670-4.0			D: 1670-5.0								
NM TO LT VOR	14.1	13	12	11	10	9	8	7	6	5	4	3	2	1	0.4
ALT (3.4° APCH PATH)	6400	6000	5640	5280	4920	4560	4200	3840	3480	3120	2760	2400	2030	1670	1440