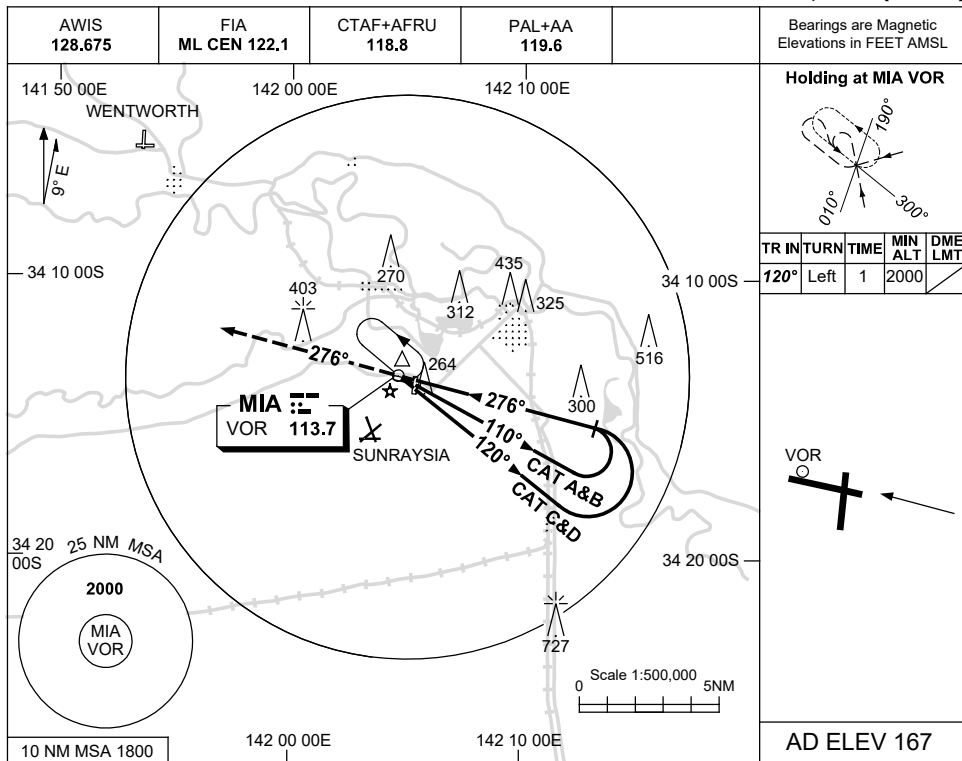


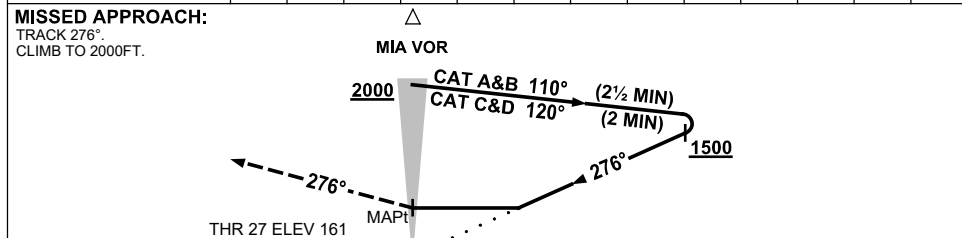
USE QNH

VOR-Y RWY 27
MILDURA, VIC (YMIA)

23 MAR 2023



DIST BY DME	NOT APPLICABLE
ALT (3° APCH PATH)	



NOTES

- MAX IAS:
INITIAL : 210KT.

CATEGORY	A	B	C	D
S-I VOR	840 (673-3.8)			
CIRCLING	840 (673-2.4)	900 (733-4.0)	980 (813-5.0)	
ALTERNATE	(1173-4.4)	(1233-6.0)	(1313-7.0)	

Changes: SUNRAYSLA ALA.

MIAVO02-174