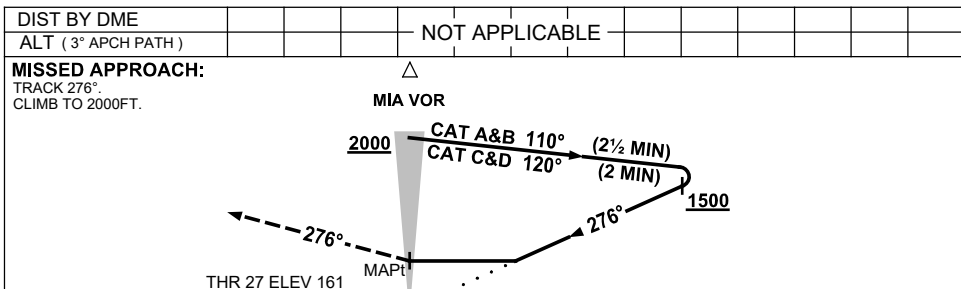
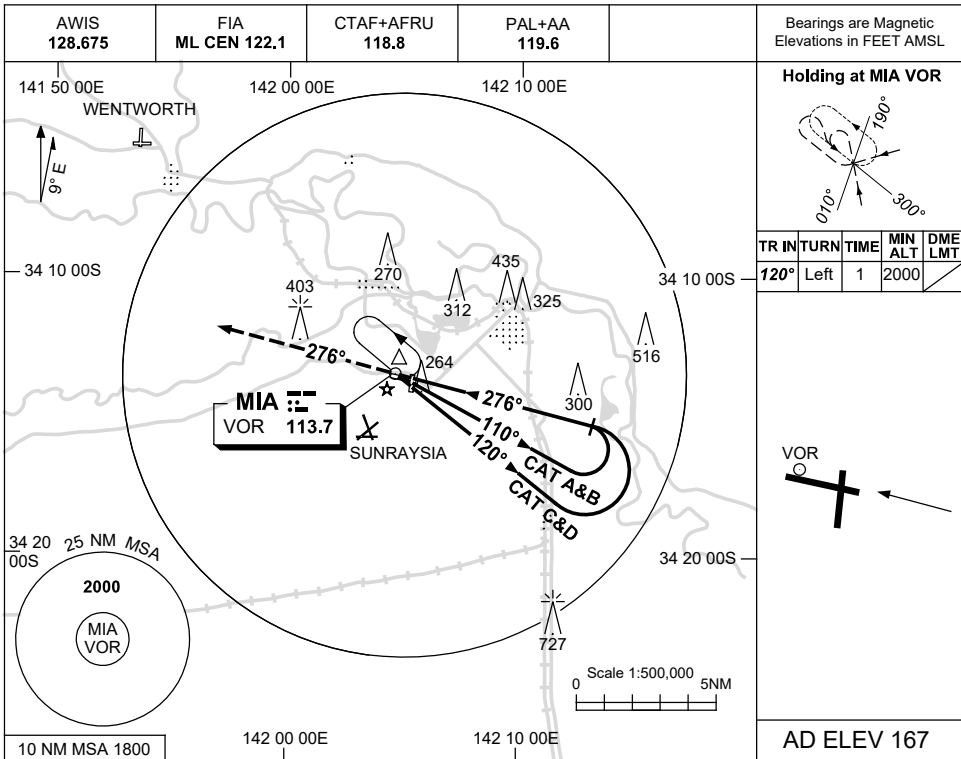


USE QNH

VOR-Y RWY 27  
MILDURA, VIC (YMIA)

23 MAR 2023



**NOTES**

- MAX IAS:  
INITIAL : 210KT.

CATEGORY	A	B	C	D
S-I VOR	<b>840 (673-3.8)</b>			
CIRCLING	<b>840 (673-2.4)</b>	<b>900 (733-4.0)</b>	<b>980 (813-5.0)</b>	
ALTERNATE	(1173-4.4)	(1233-6.0)	(1313-7.0)	

Changes: SUNRAYSLA ALA.

MIAVO02-174