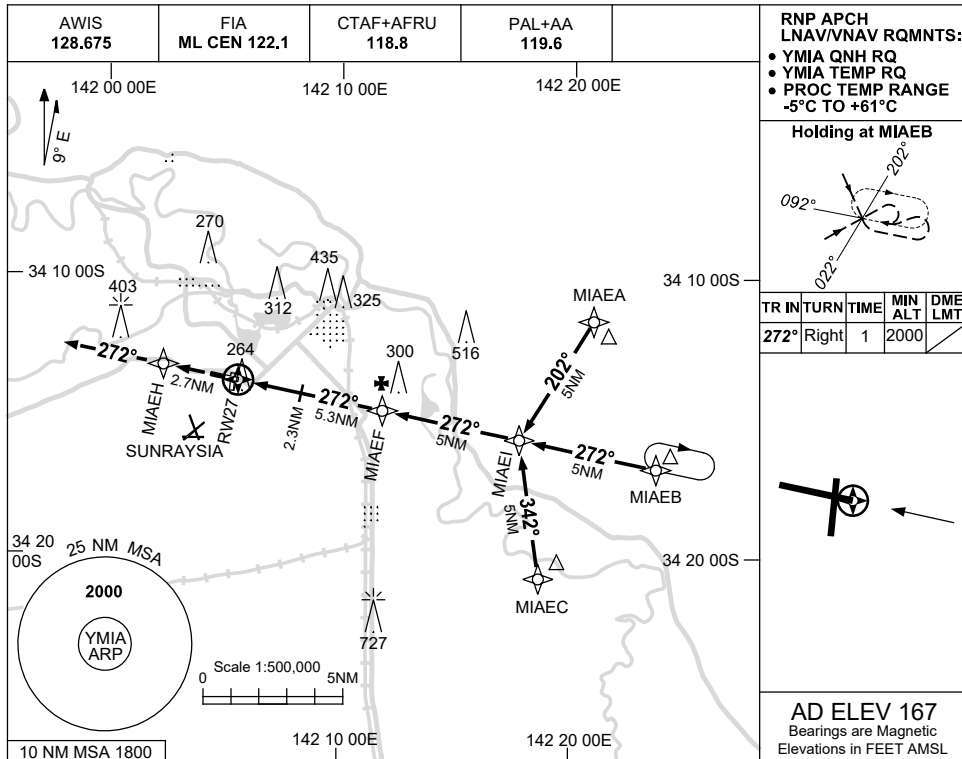


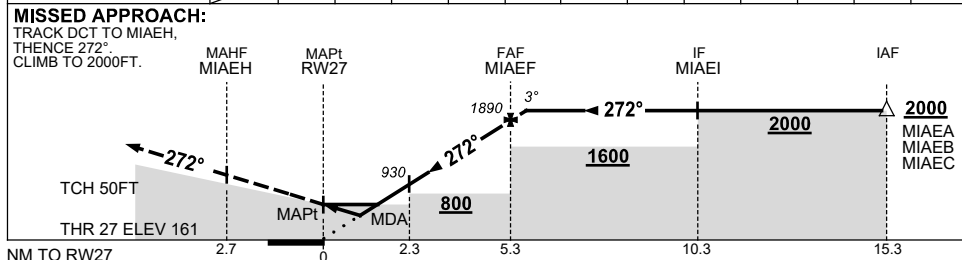
USE QNH

RNP RWY 27  
MILDURA, VIC (YMIA)

15 JUN 2023



NM TO NEXT WPT	RW27	0.8	1.4	2.3	3	4	MIAEF	0.4					
ALT (3° APCH PATH)		480	660	930	1170	1480	1890	2000					



**NOTES**

CATEGORY	A	B	C	D
LNAV/VNAV		480 (319-1.8)		
LNAV		660 (493-2.8)		
CIRCLING	840 (673-2.4)		900 (733-4.0)	980 (813-5.0)
ALTERNATE	(1173-4.4)		(1233-6.0)	(1313-7.0)

1. MAX IAS:  
INITIAL : 210KLT.
2. **CAUTION:**  
GLIDER OPS 2.3NM  
SSW OF YMIA AD.

Changes: CHART TITLE, PBN SPECIFICATION BOX, Editorial.

MIAGN03-175