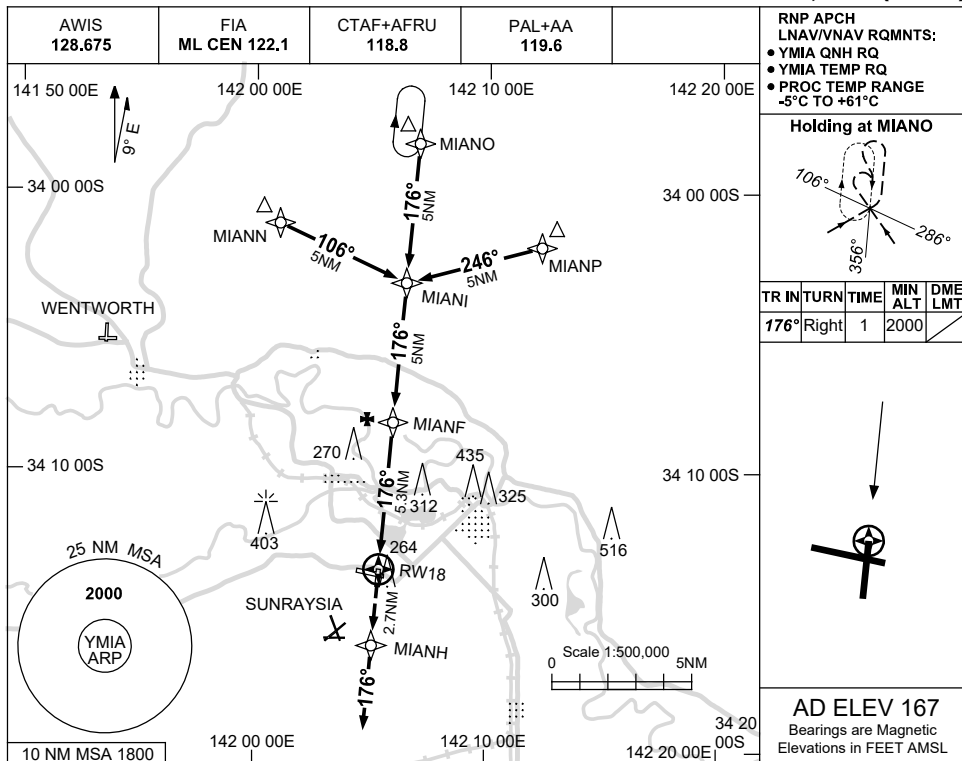


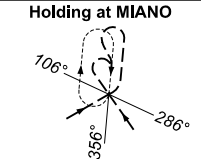
USE QNH

RNP RWY 18
MILDURA, VIC (YMIA)

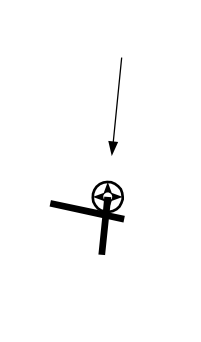
15 JUN 2023



RNP APCH
LNAV/VNAV RQMNTS:
• YMIA QNH RQ
• YMIA TEMP RQ
• PROC TEMP RANGE
-5°C TO +61°C

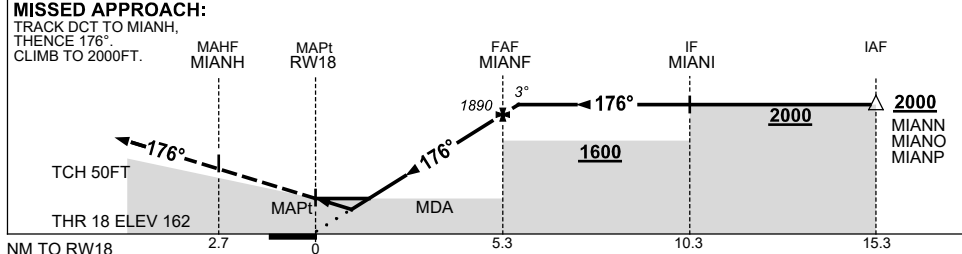


TR IN	TURN	TIME	MIN ALT	DME LMT
176°	Right	1	2000	



AD ELEV 167
Bearings are Magnetic
Elevations in FEET AMSL

NM TO NEXT WPT	RW18	0.8	1.4	2	3	4	MIANF	0.3				
ALT (3° APCH PATH)		470	660	850	1170	1490	1890	2000				



NOTES

CATEGORY	A	B	C	D
LNAV/VNAV	470 (308-1.7)			NOT APPLICABLE
LNAV	660 (493-2.8)			
CIRCLING	840 (673-2.4)		900 (733-4.0)	980 (813-5.0)
ALTERNATE	(1173-4.4)		(1233-6.0)	(1313-7.0)

- MAX IAS:
INITIAL : 210KT.
- CAUTION:**
GLIDER OPS 2.3NM
SSW OF YMIA AD
CONFLICTS WITH
MISSED APCH AREA.

Changes: CHART TITLE, PBN SPECIFICATION BOX, Editorial. MIAGN02-175