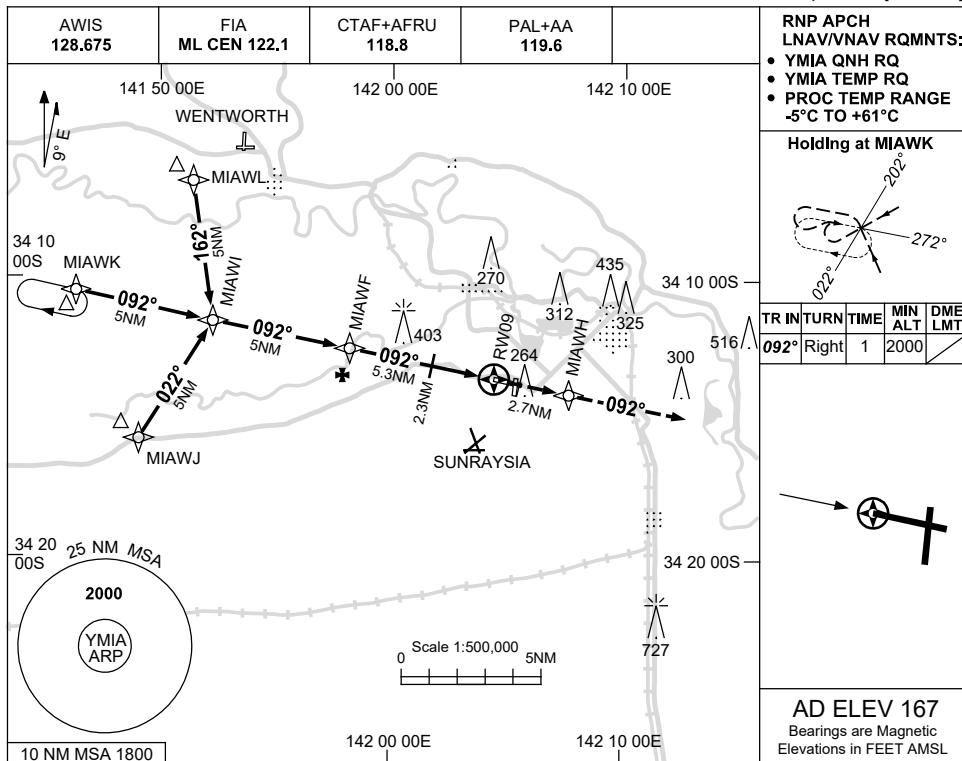


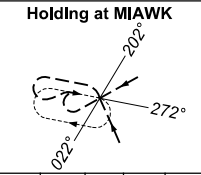
USE QNH

RNP RWY 09  
MILDURA, VIC (YMIA)

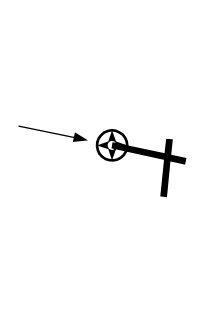
15 JUN 2023



RNP APCH  
LNAV/VNAV RQMTS:  
• YMIA QNH RQ  
• YMIA TEMP RQ  
• PROC TEMP RANGE  
-5°C TO +61°C

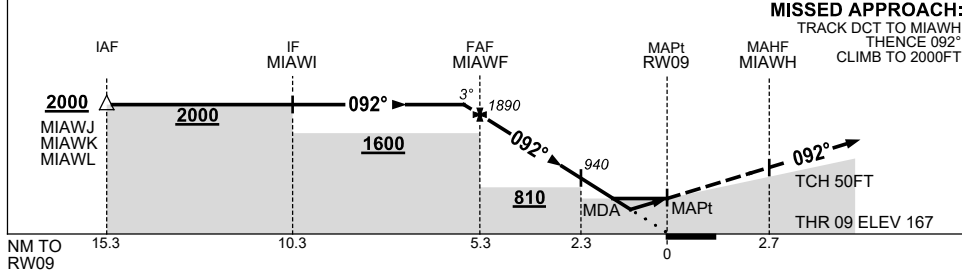


TR	IN	TURN	TIME	MIN ALT	DME LMT
092°	Right		1	2000	



AD ELEV 167  
Bearings are Magnetic  
Elevations in FEET AMSL

NM TO NEXT WPT	0.3	MIAWF	4	3	2.3	1.4	0.8	RW09
ALT (3° APCH PATH)	2000	1890	1490	1170	940	660	480	



MISSED APPROACH:  
TRACK DCT TO MIAWH,  
THENCE 092°  
CLIMB TO 2000FT.

THR 09 ELEV 167

CATEGORY	A	B	C	D
LNAV/VNAV		480 (313-1.7)		
LNAV		660 (493-2.8)		
CIRCLING	840 (673-2.4)	900 (733-4.0)	980 (813-5.0)	
ALTERNATE	(1173-4.4)	(1233-6.0)	(1313-7.0)	

- NOTES
- MAX IAS:  
INITIAL : 210KT.
  - CAUTION:  
GLIDER OPS 2.3NM  
SSW OF YMIA AD.

Changes: CHART TITLE, PBN SPECIFICATION BOX, Editorial.

MIAGN01-175