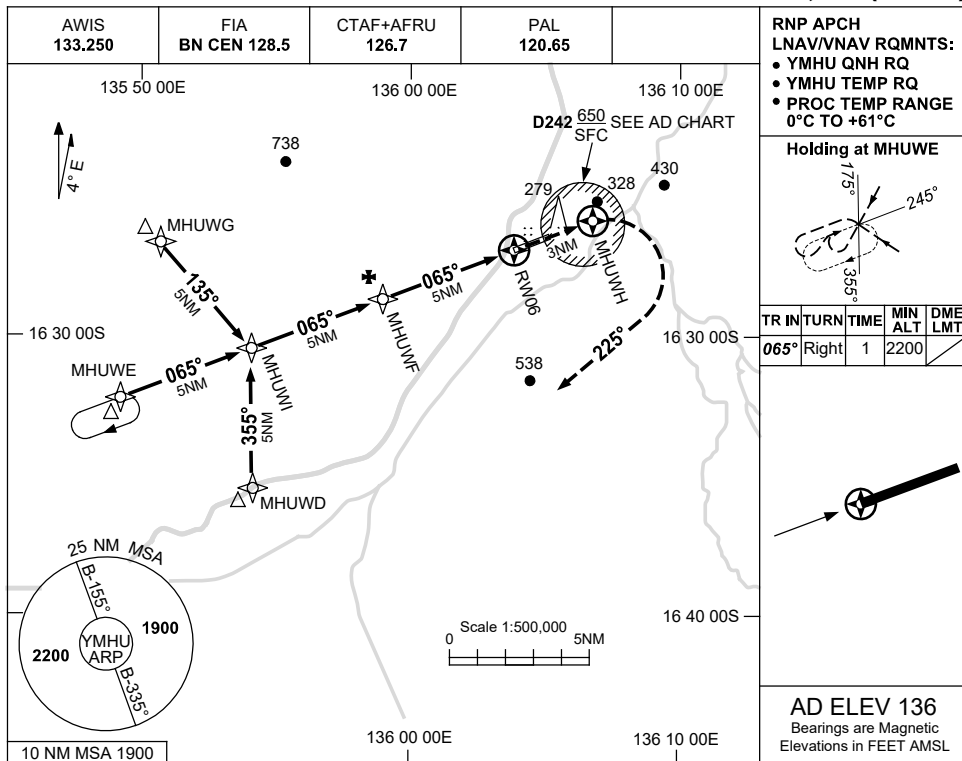


USE QNH

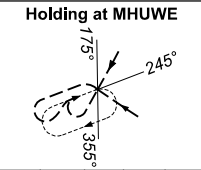
RNP RWY 06

8 SEP 2022

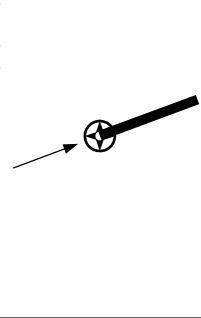
McARTHUR RIVER MINE, NT (YMHU)



RNP APCH  
LNAV/VNAV RQMNTS:  
• YMHU QNH RQ  
• YMHU TEMP RQ  
• PROC TEMP RANGE  
0°C TO +61°C

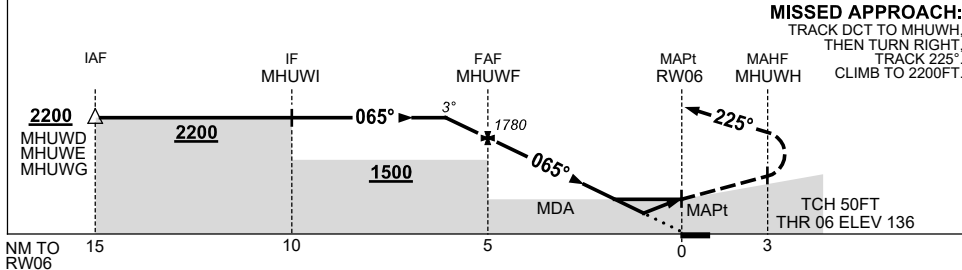


TR	IN	TURN	TIME	MIN ALT	DME LMT
065°	Right		1	2200	



AD ELEV 136  
Bearings are Magnetic  
Elevations in FEET AMSL

NM TO NEXT WPT	1.3	1	MHUWF	4	3	2	1.7	0.9	RW06
ALT (3° APCH PATH)	2200	2100	1780	1460	1140	820	730	470	



**MISSED APPROACH:**  
TRACK DCT TO MHUWH,  
THEN TURN RIGHT,  
TRACK 225°,  
CLIMB TO 2200FT.

**NOTES**

CATEGORY	A	B	C	D
LNAV/VNAV	470 (334-1.9)			NOT APPLICABLE
LNAV	730 (594-3.4)			
CIRCLING	910 (774-2.4)		1140 (1004-4.0)	
ALTERNATE	(1274-4.4)		(1504-6.0)	

1. MAX IAS:  
INITIAL : 230KT.

Changes: CHART TITLE, PBN SPECIFICATION BOX.

MHUGN01-172