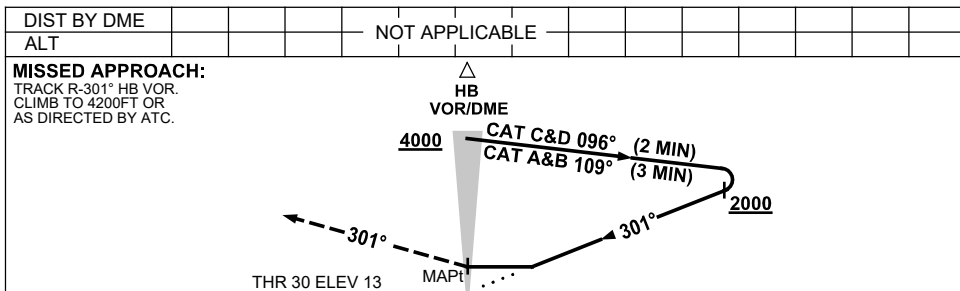
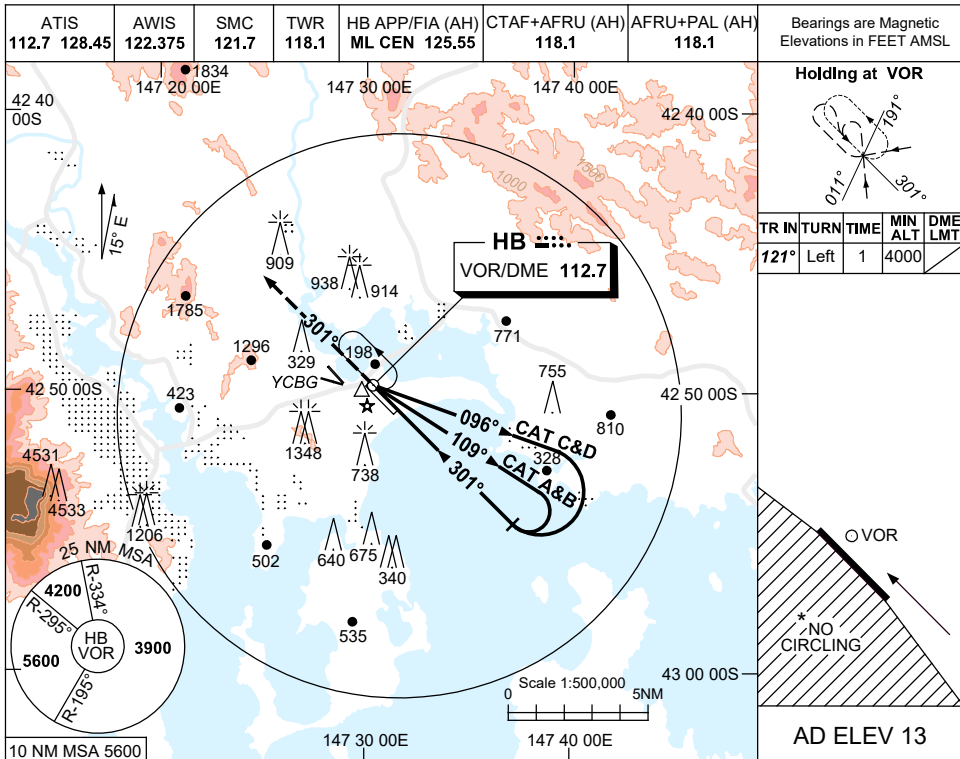


USE QNH

VOR-Y RWY 30
HOBART, TAS (YMHB)

7 SEP 2023



NOTES

1. MAX IAS:
HOLDING: 190KT.
INITIAL:
CAT C&D 210KT.
- *2. NO CIRCLING WEST
OF RWY 12/30.
3. COLOUR: SEE
SPEC NOTICES.

CATEGORY	A	B	C	D
S-I VOR	980 (967-5.0)			
CIRCLING *	1240 (1227-2.4)	1530 (1517-4.0)	1600 (1587-5.0)	
ALTERNATE	(1727-4.4)	(2017-6.0)	(2087-7.0)	

Changes: YCBG DEPICTION.

MHBVO03-176