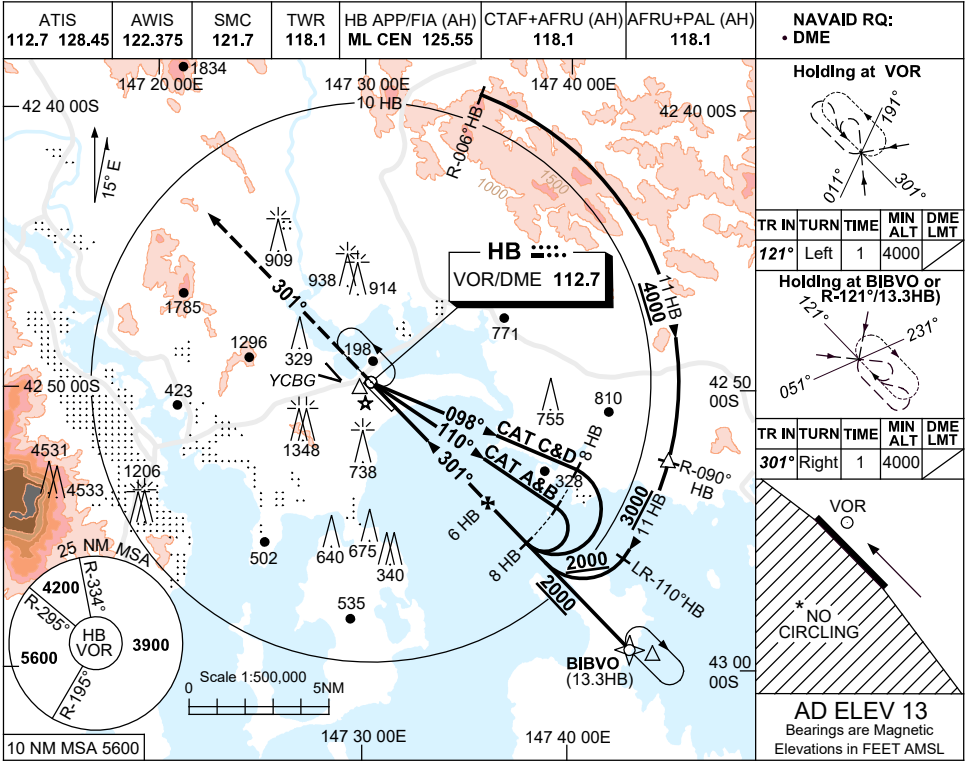


USE QNH

VOR-Z RWY 30

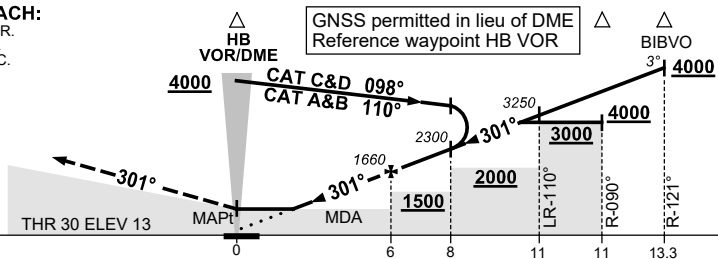
**HOBART, TAS (YMHB)**

7 SEP 2023



DIST TO HB DME	2.9	3	4	5	6	7	8	9	10.2	11	12	13.3		
ALT (3° APCH PATH)	660	710	1020	1340	1660	1980	2300	2620	3000	3250	3570	4000		

**MISSED APPROACH:**  
TRACK R-301° HB VOR.  
CLIMB TO 4200FT OR  
AS DIRECTED BY ATC.



NM TO HB DME

**NOTES**

1. MAX IAS:  
HOLDING VOR: 190KT.  
INITIAL:  
CAT C&D 210KT.
- \*2. NO CIRCLING WEST OF RWY 12/30.
3. MIN MAP GRAD 5.2%  
CTA CONTAINMENT.
4. COLOUR: SEE SPEC NOTICES.

CATEGORY	A	B	C	D
S-I VOR/DME	<b>660 (647-3.7)</b>			
CIRCLING *	<b>1240 (1227-2.4)</b>	<b>1530 (1517-4.0)</b>	<b>1600 (1587-5.0)</b>	
ALTERNATE	(1727-4.4)		(2087-7.0)	

Changes: YCBG DEPICTION.

MHBVO02-176