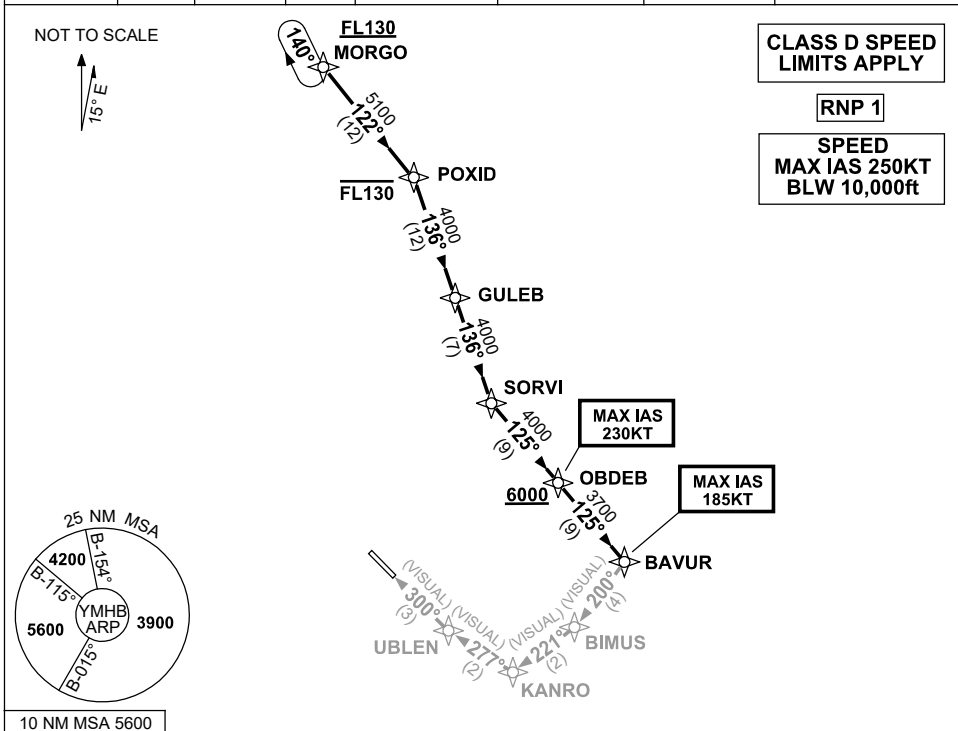


**STANDARD INSTRUMENT ARRIVAL (STAR)  
MORG0 THREE VICTOR ARRIVAL (RNAV)  
HOBART, TAS (YMHB)**

**21 MAR 2024**

ATIS 112.7 128.45	AWIS 122.375	SMC/ACD 121.7	TWR 118.1	HB APP/FIA (AH) ML CEN 125.55	CTAF+AFRU (AH) 118.1	AFRU+PAL (AH) 118.1	Bearings are Magnetic Elevations in FEET AMSL
----------------------	-----------------	------------------	--------------	----------------------------------	-------------------------	------------------------	--



**ARRIVAL: MORG0 THREE VICTOR**

**RWY 30:**

- Cross** MORG0 AT or ABV FL130
- From MORG0 track 122° to POXID
- Cross** POXID AT or BLW FL130
- Turn **RIGHT**, track 136° to GULEB
- Track 136° to SORVI
- Turn **LEFT**, track 125° to OBDEB
- Cross** OBDEB AT or ABV 6000ft
- MAX IAS 230KT from OBDEB
- Track 125° to BAVUR
- MAX IAS 185KT from BAVUR
- Turn **RIGHT**, track 200° VISUAL to BIMUS
- Turn **RIGHT**, track 221° VISUAL to KANRO
- Turn **RIGHT**, track 277° VISUAL to UBLEN for 3NM VISUAL final

**COMMUNICATIONS FAILURE: PROCEDURE IN IMC**

- Squawk 7600, comply with vertical navigation requirements, but not below MSA.
- Track via the latest STAR clearance to the nominated runway, then fly the most suitable approach in accordance with ERSA EMERG Section 1.5.

Changes: REVISED PROC, VALIDITY INDICATOR.

MHBSR07-178