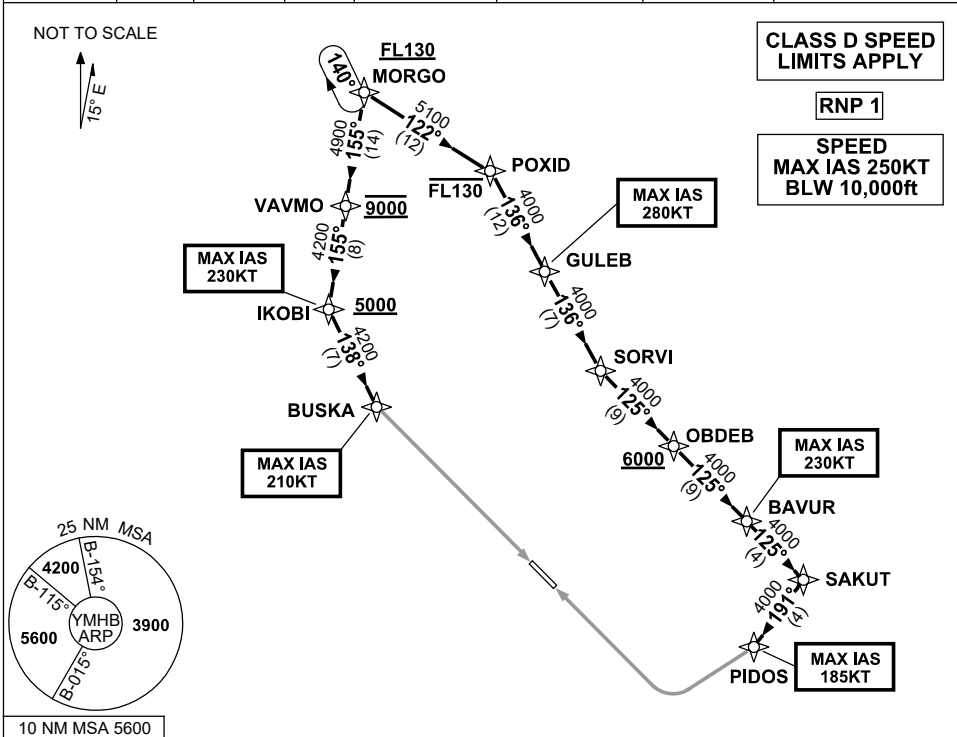


**STANDARD INSTRUMENT ARRIVAL (STAR)  
MORGO THREE ALPHA ARRIVAL (RNAV)  
HOBART, TAS (YMHB)**

**21 MAR 2024**

ATIS 112.7 128.45	AWIS 122.375	SMC/ACD 121.7	TWR 118.1	HB APP/FIA (AH) ML CEN 125.55	CTAF+AFRU (AH) 118.1	AFRU+PAL (AH) 118.1	Bearings are Magnetic Elevations in FEET AMSL
----------------------	-----------------	------------------	--------------	----------------------------------	-------------------------	------------------------	--



**ARRIVAL: MORGO THREE ALPHA**

**RWY 12:**

- Cross MORGO AT or ABV FL130**
- From MORGO track 155° to VAVMO  
**Cross VAVMO AT 9000ft**
- Track 155° to IKOBI  
**Cross IKOBI AT or ABV 5000ft**  
MAX IAS 230KT from IKOBI
- Turn LEFT, track 138° to BUSKA  
MAX IAS 210KT from BUSKA
- Turn LEFT, track via  
ILS-Z or LOC-Z RWY 12,  
ILS-Y or LOC-Y RWY 12 or  
RNP Z RWY 12

**RWY 30:**

- Cross MORGO AT or ABV FL130**
- From MORGO track 122° to POXID  
**Cross POXID AT or BLW FL130**
- Turn RIGHT, track 136° to GULEB  
MAX IAS 280KT from GULEB
- Track 136° to SORVI
- Turn LEFT, track 125° to OBDEB  
**Cross OBDEB AT or ABV 6000ft**
- Track 125° to BAVUR  
MAX IAS 230KT from BAVUR
- Track 125° to SAKUT
- Turn RIGHT, track 191° to PIDOS  
MAX IAS 185KT from PIDOS
- Turn RIGHT, track via  
RNP Z RWY 30

**COMMUNICATIONS FAILURE: PROCEDURE IN IMC**

- Squawk 7600, comply with vertical navigation requirements, but not below MSA.
- Track via the latest STAR clearance to the nominated runway, then fly the most suitable approach in accordance with ERSA EMERG Section 1.5.

Changes: REVISED PROC, VALIDITY INDICATOR.

MHBSR04-178