

**STANDARD INSTRUMENT ARRIVAL (STAR)  
MORGO THREE WHISKEY ARRIVAL (RNAV)  
HOBART, TAS (YMHB)**

**21 MAR 2024**

ATIS 112.7 128.45	AWIS 122.375	SMC/ACD 121.7	TWR 118.1	HB APP/FIA (AH) ML CEN 125.55	CTAF+AFRU (AH) 118.1	AFRU+PAL (AH) 118.1	Bearings are Magnetic Elevations in FEET AMSL
----------------------	-----------------	------------------	--------------	----------------------------------	-------------------------	------------------------	--

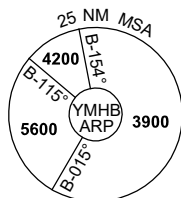
NOT TO SCALE



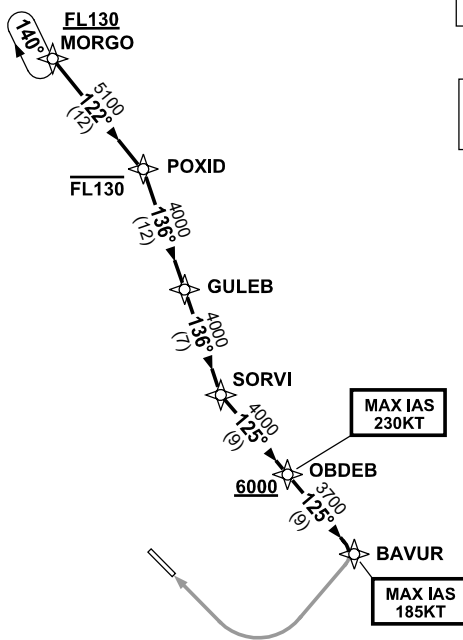
**CLASS D SPEED  
LIMITS APPLY**

**RNP 1**

**SPEED  
MAX IAS 250KT  
BLW 10,000ft**



10 NM MSA 5600



**ARRIVAL: MORGO THREE WHISKEY**

**RWY 30:**

- **Cross MORGO** AT or ABV FL130
- From MORGO track 122° to POXID
- **Cross POXID** AT or BLW FL130
- Turn RIGHT, track 136° to GULEB
- Track 136° to SORVI
- Turn LEFT, track 125° to OBDEB
- **Cross OBDEB** AT or ABV 6000ft
- MAX IAS 230KT from OBDEB
- Track 125° to BAVUR
- MAX IAS 185KT from BAVUR
- Turn RIGHT, track via RNP W RWY 30 (AR)

**COMMUNICATIONS FAILURE: PROCEDURE IN IMC**

- Squawk 7600, comply with vertical navigation requirements, but not below MSA.
- Track via the latest STAR clearance to the nominated runway, then fly the most suitable approach in accordance with ERSAs EMERG Section 1.5.

Changes: REVISED PROC, VALIDITY INDICATOR.

MHBSR03-178