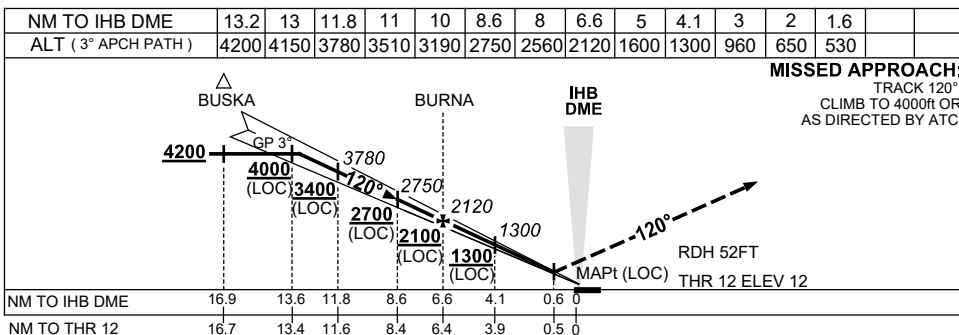
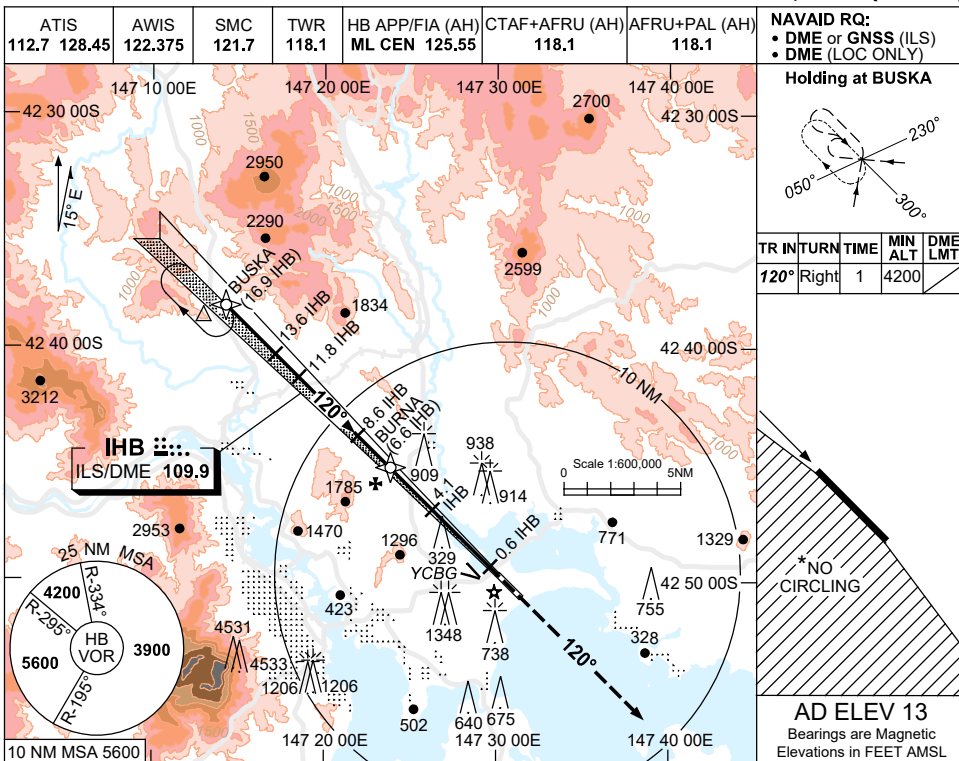


USE QNH

ILS-Z or LOC-Z RWY 12
HOBART, TAS (YMHB)

21 MAR 2024



MISSED APPROACH:
 TRACK 120°
 CLIMB TO 4000ft OR
 AS DIRECTED BY ATC.

| CATEGORY | A | B | C | D |
|-----------|-----------------|---------------|-----------------|-----------------|
| S-I ILS # | | 320 (308) 0.8 | | |
| S-I LOC# | | 530 (517-2.1) | | |
| CIRCLING* | 1240 (1227-2.4) | | 1530 (1517-4.0) | 1600 (1587-5.0) |
| ALTERNATE | (1727-4.4) | | (2017-6.0) | (2087-7.0) |

NOTES
 1. MAX IAS:
 HOLDING: 200KT.
 *2. NO CIRCLING WEST OF RWY 12/30.
 #3. MIN MAP GRAD ILS 4.2%, MIN MAP GRAD LOC 3.9% CTA CONTAINMENT.
 4. COLOUR: SEE SPEC NOTICES.

Changes: DELETED MAX IAS AT BUSKA, VIS, Editorial.

MHBII02-178