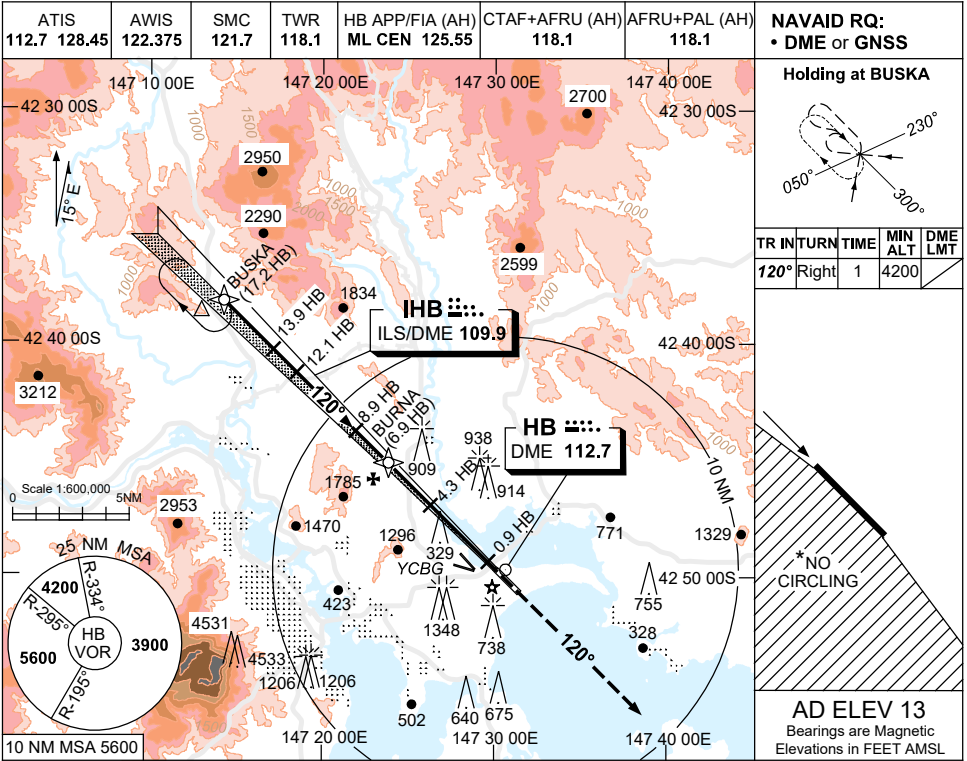


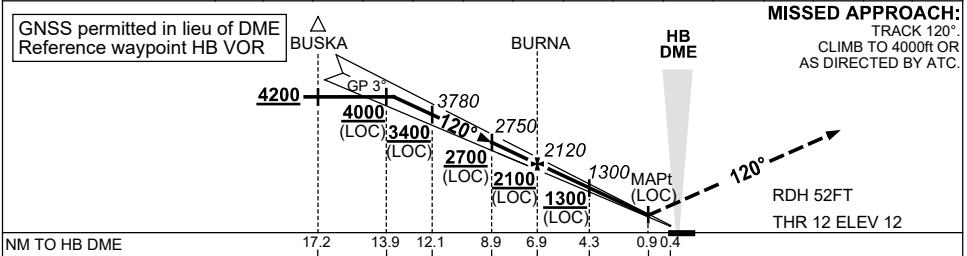
USE QNH

ILS-Y or LOC-Y RWY 12
HOBART, TAS (YMHB)

21 MAR 2024



NM TO HB DME	13.4	13	12.1	11	10	8.9	8	6.9	5	4.3	3	2	1.9		
ALT (3° APCH PATH)	4200	4070	3780	3430	3110	2750	2480	2120	1520	1300	880	560	530		



CATEGORY	A	B	C	D
S-I ILS #		320 (308)	0.8	
S-I LOC#		530 (517-2.1)		
CIRCLING*	1240 (1227-2.4)	1530 (1517-4.0)	1600 (1587-5.0)	
ALTERNATE	(1727-4.4)	(2017-6.0)	(2087-7.0)	

NOTES

- MAX IAS:
HOLDING : 200KT.
- NO CIRCLING WEST OF RWY 12/30.
- MIN MAP GRAD ILS 4.2%,
MIN MAP GRAD LOC 3.9%
CTA CONTAINMENT.
- COLOUR: SEE SPEC NOTICES.

Changes: DELETED MAX IAS AT BUSKA, VIS.

MHBII01-178