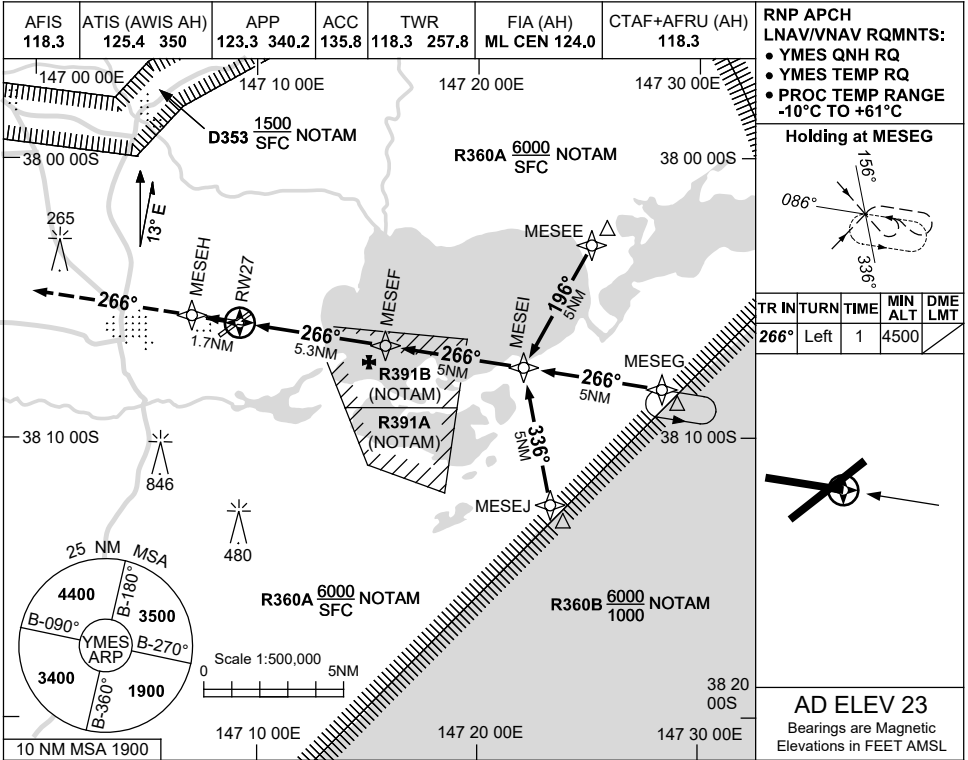


USE QNH

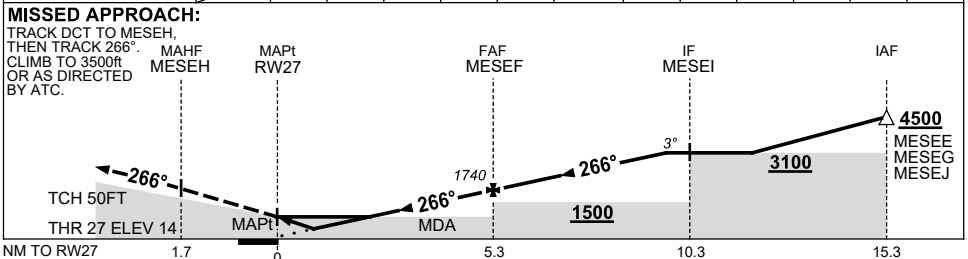
RNP RWY 27

30 NOV 2023

EAST SALE, VIC (YMES)



NM TO NEXT WPT	RW27	0.9	1.5	2	3	4	MESEF	1	2	3	4.3		
ALT (3° APCH PATH)		360	550	700	1020	1340	1740	2060	2380	2700	3100		



**NOTES**

1. MAX IAS: INITIAL : 210KT.

CATEGORY	A	B	C	D
LNAV/VNAV		360 (346-1.9)		
LNAV		550 (536-3.0)		
CIRCLING	620 (597-2.4)	830 (807-4.0)		1030 (1007-5.0)
ALTERNATE	(1097-4.4)		(1307-6.0)	(1507-7.0)

Changes: R359A-B DELETED, R360A-B ADDED, Editorial.

MESGN03-177