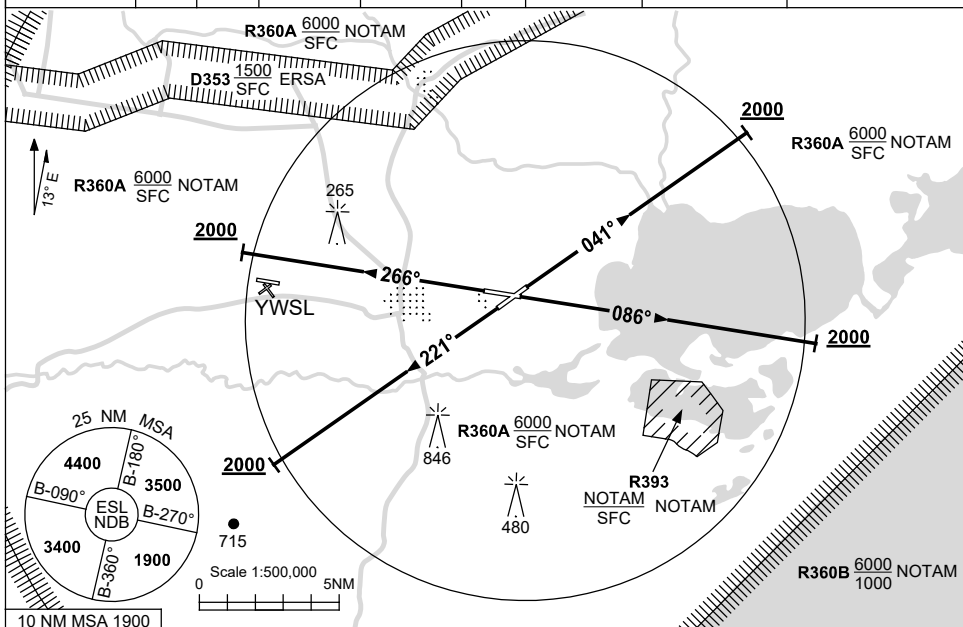


# STANDARD INSTRUMENT DEPARTURES (SID) EAST SALE FIVE DEPARTURE (RADAR) EAST SALE, VIC (YMES)

20 MAR 2025

ATIS (AWIS AH) 125.4 350	SMC 127.25	ACD 134.1	TWR 118.3 257.8	APP 123.3 340.2	ACC 135.8	FIA (AH) ML CEN 124.0	CTAF+AFRU (AH) 118.3	Bearings are Magnetic. Elevations in FEET AMSL
-----------------------------	---------------	--------------	--------------------	--------------------	--------------	--------------------------	-------------------------	---



## EAST SALE FIVE DEPARTURE (RADAR)

### RWY 04

GRAD 3.3%

- Track 041°
- At 2000ft, but not before DER, turn to assigned heading or track

### RWY 09

GRAD 3.3%

- Track 086°
- At 2000ft, but not before DER, turn to assigned heading or track

### RWY 22

GRAD 3.6% to 1200ft then 3.3%

- Track 221°
- At 2000ft, but not before DER, turn to assigned heading or track

### RWY 27

GRAD 3.3%

- Track 266°
- At 2000ft, but not before DER, turn to assigned heading or track

## COMMUNICATIONS FAILURE PROCEDURE

On recognition of communication failure

- Squawk 7600
- Maintain last assigned vector for two minutes, and
- CLIMB IF NECESSARY TO MINIMUM SAFE ALTITUDE, to maintain terrain clearance, then
- proceed in accordance with the latest ATC route clearance acknowledged.