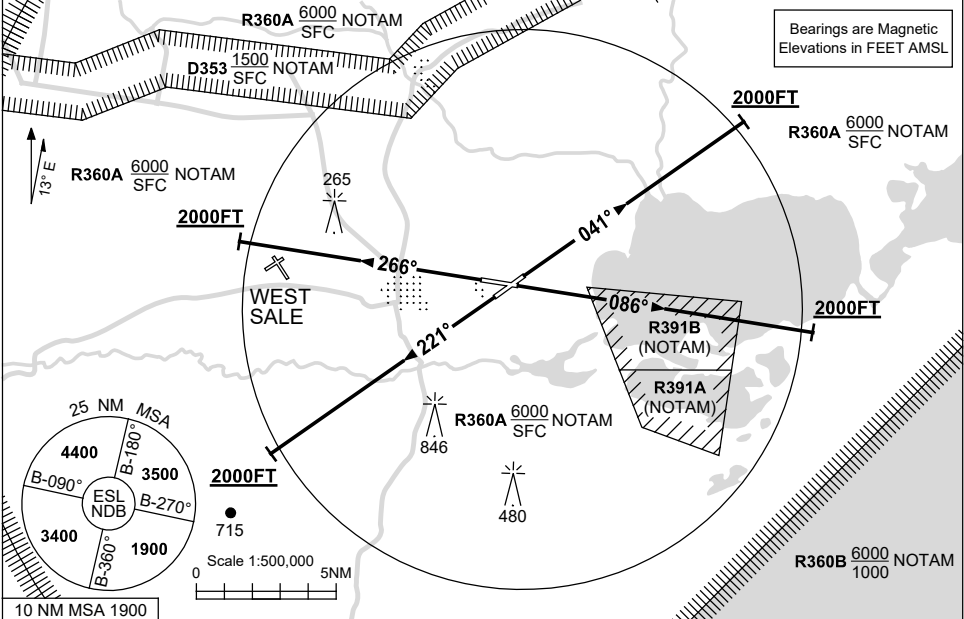


**STANDARD INSTRUMENT DEPARTURES (SID)
EAST SALE FIVE DEPARTURE (RADAR)
EAST SALE, VIC (YMES)**

30 NOV 2023

| | | | | | | | | |
|---------------|-----------------------------|---------------|--------------|--------------------|--------------------|--------------|--------------------------|-------------------------|
| AFIS 118.3 | ATIS (AWIS AH) 125.4 350 | SMC 127.25 | ACD 134.1 | TWR 118.3 257.8 | APP 123.3 340.2 | ACC 135.8 | FIA (AH) ML CEN 124.0 | CTAF+AFRU (AH) 118.3 |
|---------------|-----------------------------|---------------|--------------|--------------------|--------------------|--------------|--------------------------|-------------------------|



EAST SALE FIVE DEPARTURE (RADAR)

RWY 04

- GRAD 3.3%
- Track 041°
- At 2000ft, but not before DER, turn to assigned heading or track

RWY 09

- GRAD 3.3%
- Track 086°
- At 2000ft, but not before DER, turn to assigned heading or track

RWY 22

- GRAD 3.6% to 1200FT then 3.3%
- Track 221°
- At 2000ft, but not before DER, turn to assigned heading or track

RWY 27

- GRAD 3.3%
- Track 266°
- At 2000ft, but not before DER, turn to assigned heading or track

COMMUNICATIONS FAILURE PROCEDURE

On recognition of communication failure

- Squawk 7600
- Maintain last assigned vector for two minutes, and
- CLIMB IF NECESSARY TO MINIMUM SAFE ALTITUDE, to maintain terrain clearance, then
- proceed in accordance with the latest ATC route clearance acknowledged.

Changes: R359A-B DELETED, R360A-B ADDED.

MESDP01-177