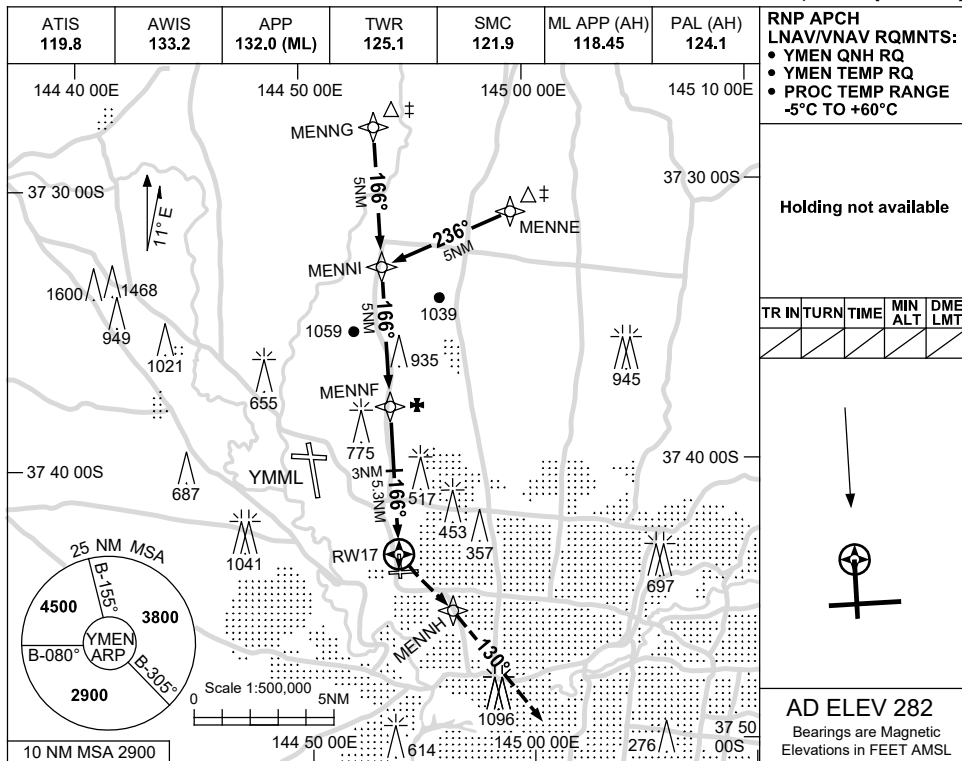


USE QNH

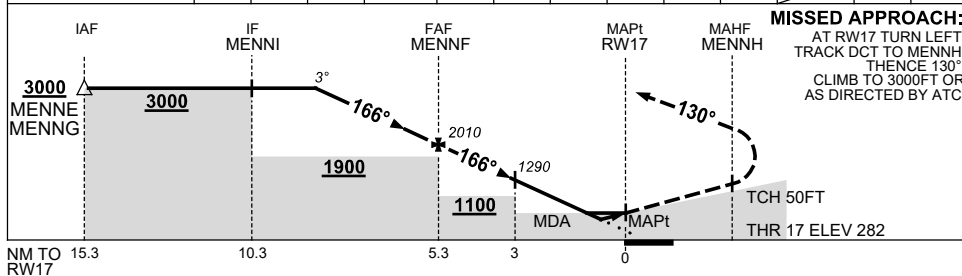
RNP RWY 17

15 JUN 2023

MELBOURNE/ESSENDON, VIC (YMEN)



NM TO NEXT WPT	3.1	2	1	MENNF	4	3	1.8	1.4	1.2	1.1	RW17		
ALT (3° APCH PATH)	3000	2650	2330	2010	1610	1290	890	770	700	670			



**NOTES**

CATEGORY	A	B	C	D
LNAV/VNAV		670 (388-2.2)	700 (418-2.3)	770 (488-2.8)
LNAV		890 (608-3.5)		
CIRCLING	990 (708-2.4)		1260 (978-4.0)	1540 (1258-5.0)
ALTERNATE	(1208-4.4)		(1478-6.0)	(1758-7.0)

1. MAX IAS:  
INITIAL : 210KT.
- ‡ 2. AIRCRAFT WILL BE  
RADAR VECTORED  
TO IAF.

Changes: MINIMUM SEGMENT ALT, Editorial.

MENGN02-175