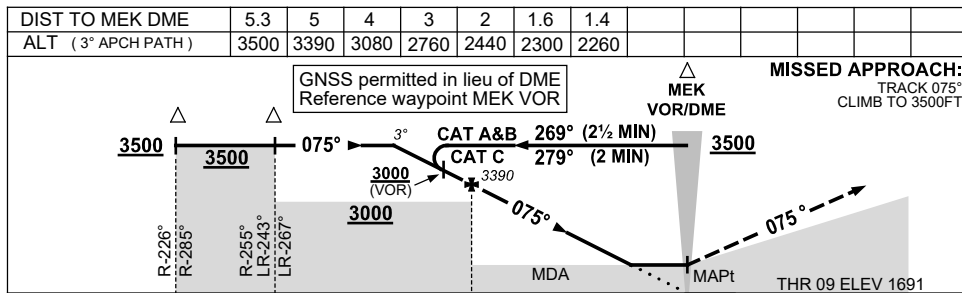
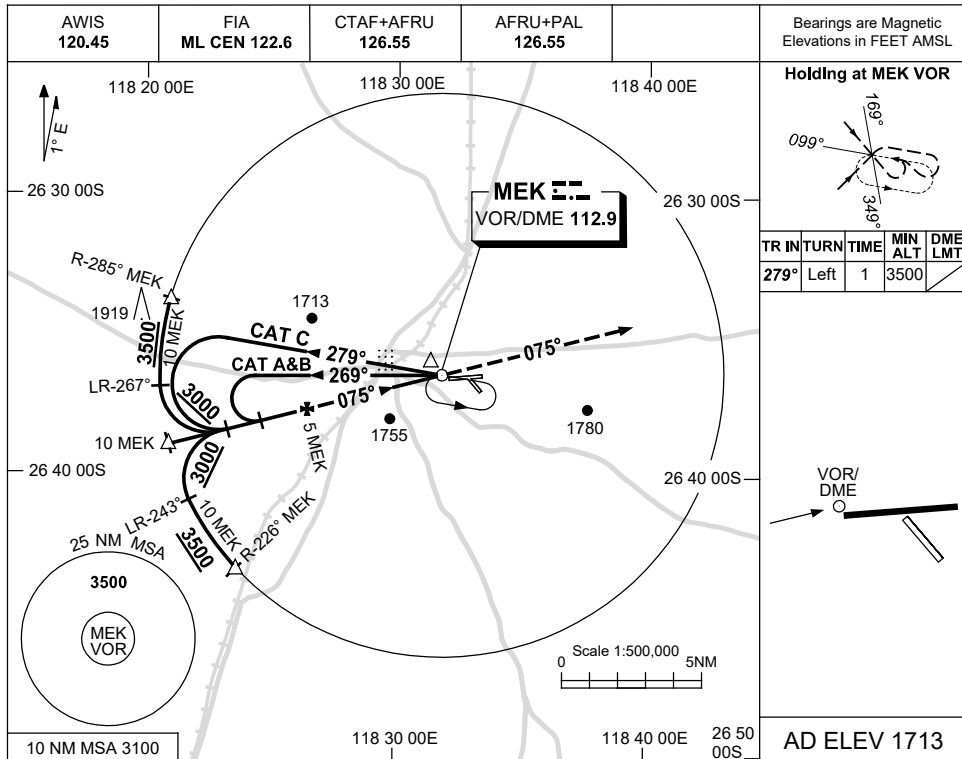


USE QNH

VOR RWY 09
MEEKATHARRA, WA (YMEK)

15 JUN 2023



NOTES

CATEGORY	A	B	C	D
S-I VOR		2300 (609-3.5)		NOT APPLICABLE
S-I VOR/DME		2260 (569-3.2)		
CIRCLING	2440 (727-2.4)		2530 (817-4.0)	
ALTERNATE		(1227-4.4)	(1317-6.0)	

1. MAX IAS :
HOLDING: 210KT.
INITIAL : 210KT.

Changes: MAG TRACKS, DIST/ALT TABLE, GRID COORD FORMAT, Editorial.

MEKVO01-175