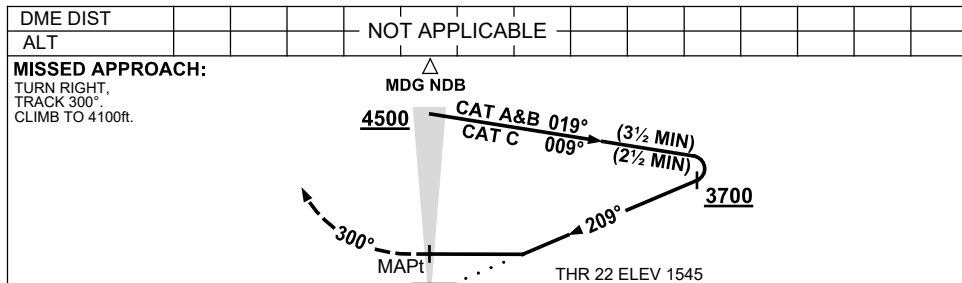
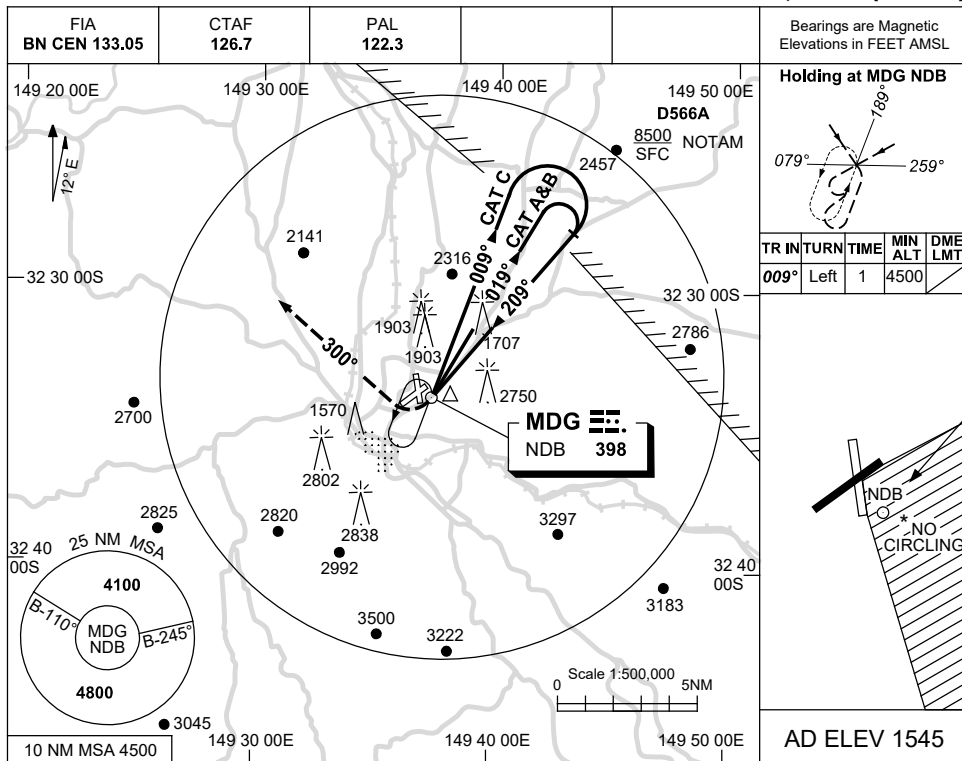


USE QNH

NDB RWY 22

21 MAR 2024

MUDGEES, NSW (YMDG)



NOTES

- MAX IAS:
 INITIAL :
 CAT A & B 140KT.
 CAT C 210KT.
- NO CIRCLING IN SECTOR S OF RWY 04/22 AND E OF RWY 16/34.
- AWIS (PHONE) 02 9353 6439

CATEGORY	A	B	C	D
S-I NDB	3110 (1565-5.0)			NOT APPLICABLE
CIRCLING *	3030 (1485-2.4)	3520 (1975-4.0)		
ALTERNATE	(1985-4.4)	(2475-6.0)		

Changes: D566A ADDED, Editorial.

MDGNB01-178