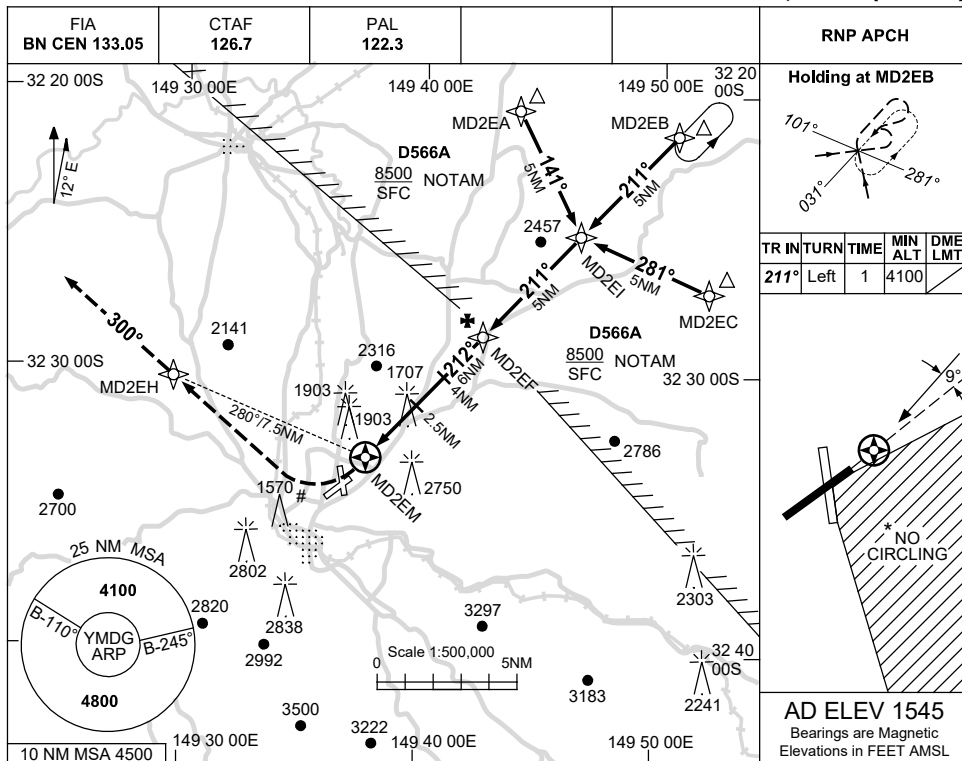


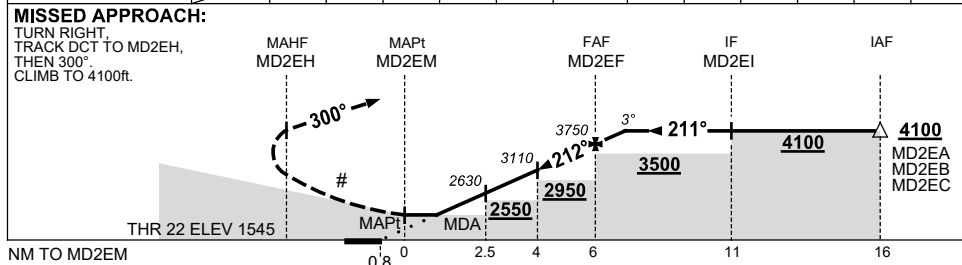
USE QNH

RNP RWY 22
MUDGEE, NSW (YMDG)

21 MAR 2024



NM TO NEXT WPT	MD2EM	1.9	2	3	4	5	MD2EF	1.1				
ALT (3° APCH PATH)		2430	2470	2790	3110	3430	MD2EF	3750	4100			



NOTES

- MAX IAS:
HOLDING: 210KT.
INITIAL : 210KT.
MAP TURN: 190KT.
- NO CIRCLING IN SECTOR S OF RWY 04/22 AND E OF RWY 16/34.
- AWIS (PHONE)
02 9353 6439

CATEGORY	A	B	C	D
LNAV	2430 (885-5.0)			NOT APPLICABLE
CIRCLING *	3110 (1565-2.4)		3520 (1975-4.0)	
ALTERNATE	(2065-4.4)		(2475-6.0)	

Changes: D566A ADDED, Editorial.

MDGGN01-178