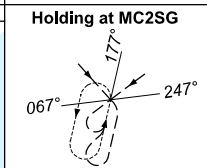
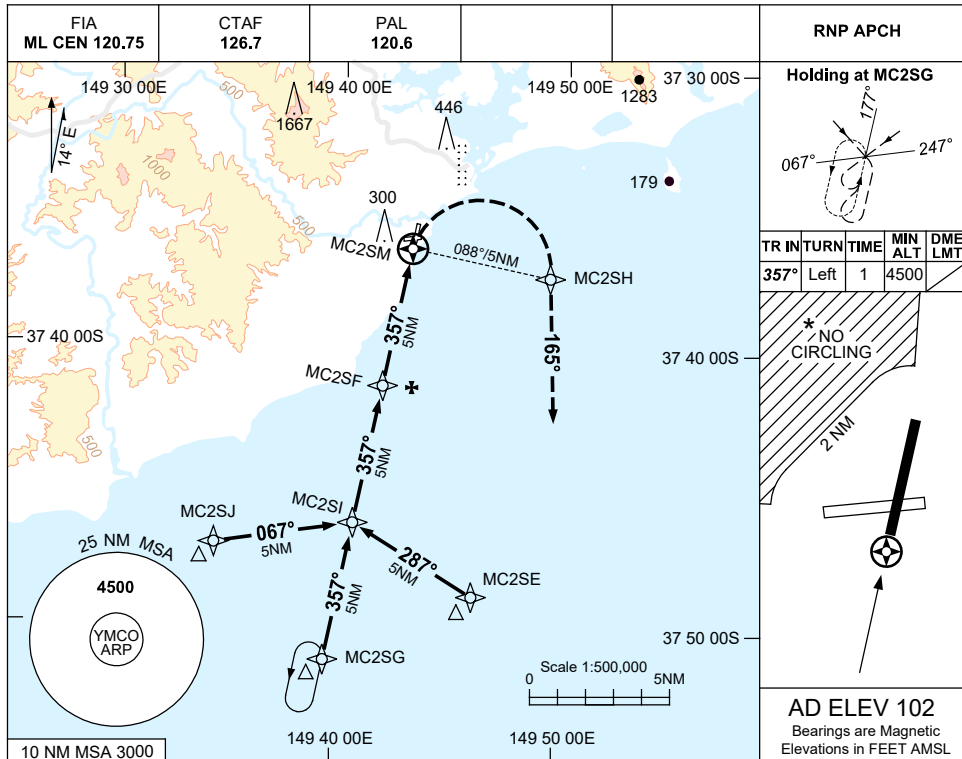


USE QNH

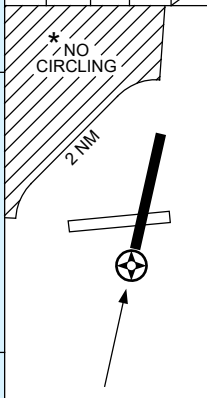
RNP RWY 36

23 MAR 2023

MALLACOOTA, VIC (YMCO)

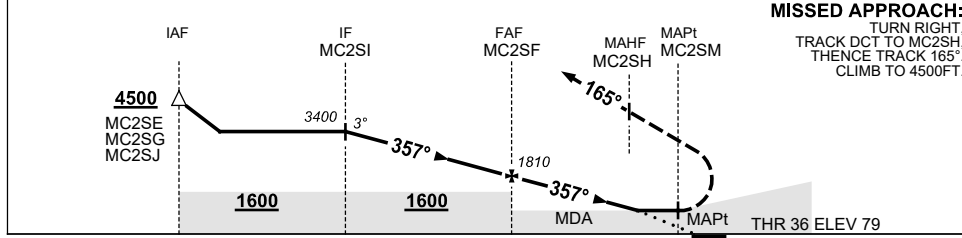


TR	INTURN	TIME	MIN ALT	DME LMT
357°	Left	1	4500	



AD ELEV 102  
Bearings are Magnetic  
Elevations in FEET AMSL

NM TO NEXT WPT	MC2SI	4	3	2	1	MC2SF	4	3	2	1.8	MC2SM		
ALT (3° APCH PATH)	3400	3080	2760	2450	2130	1810	1490	1170	850	780			



**MISSED APPROACH:**  
TURN RIGHT, TRACK DCT TO MC2SH, THENCE TRACK 165°, CLIMB TO 4500FT.

**NOTES**

CATEGORY	A	B	C	D
LNAV	780 (701-4.0)			NOT APPLICABLE
CIRCLING*	910 (808-2.4)		1270 (1168-4.0)	
ALTERNATE	(1308-4.4)		(1668-6.0)	

- MAX IAS: INITIAL : 210KT.
- NO CIRCLING IN SECTOR NW OF RWY 07 AND 18, BEYOND 2 NM.
- COLOUR: SEE SPEC NOTICES.
- AWIS (PHONE) 03 8470 3212

Changes: FROM SUP H115/22, CHART TITLE, PBN SPECIFICATION BOX.

MCOGN02-174