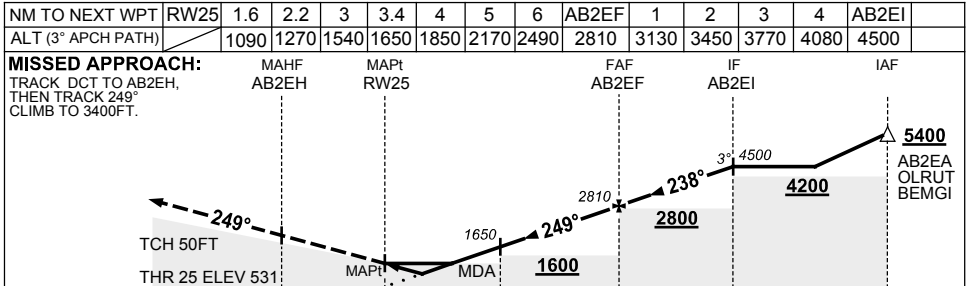
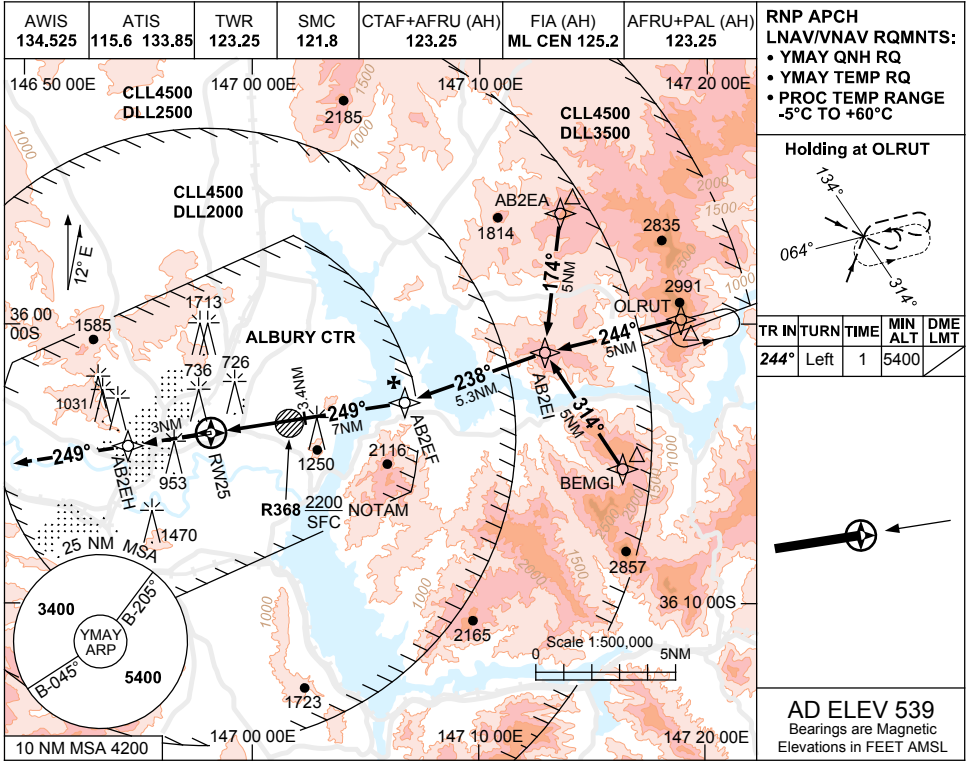


USE QNH

RNP RWY 25

30 NOV 2023

ALBURY, NSW (YMAY)



**NOTES**

- MAX IAS: INITIAL : 210KT.
- COLOUR: SEE SPEC NOTICES.
- HLDG NOT CONTAINED IN CTA.
- PROC NOT AVBL WHEN R368 ACT UNLESS ADVISED BY ATC.

CATEGORY	A	B	C	D
LNAV/VNAV		1090 (559-3.2)		
LNAV		1270 (739-4.2)		
CIRCLING	2050 (1511-2.4)	2220 (1681-4.0)		2270 (1731-5.0)
ALTERNATE	(2011-4.4)		(2181-6.0)	(2231-7.0)

Changes: CIRCLING & ALTERNATE CAT C MINIMA, Editorial.

MAYGN04-177