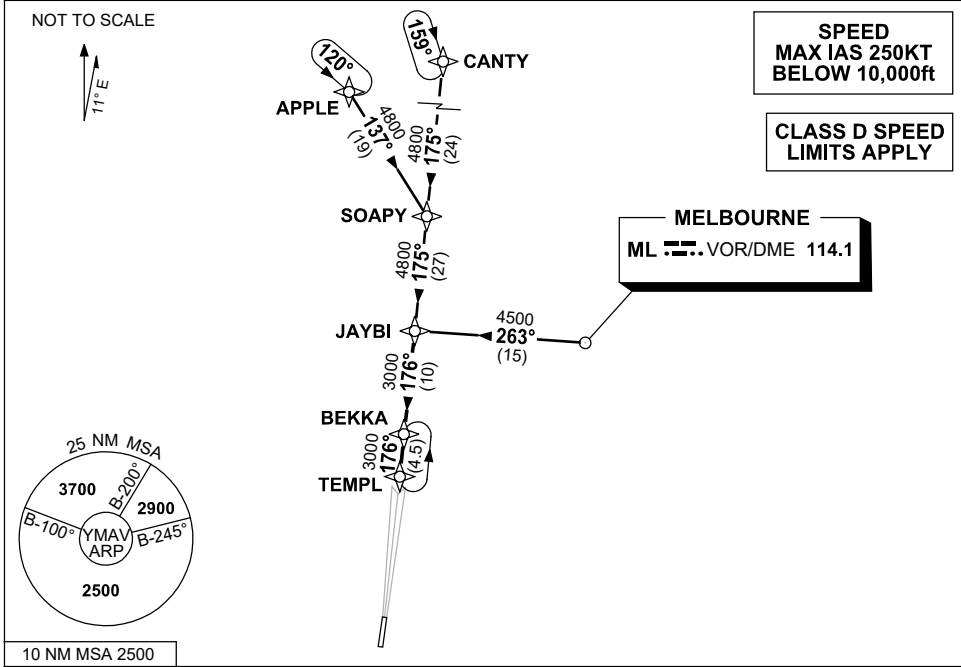


**STANDARD INSTRUMENT ARRIVAL (STAR)  
JAYBI FIVE ARRIVAL (RNAV)  
AVALON, VIC (YMAV)**

**24 MAR 2022**

ATIS 118.2 116.1	AWIS (AH) 116.1	AV APP 133.55	TWR 120.1	FIA (AH) ML CEN 135.7	CTAF+AFRU (AH) 120.1	AFRU+PAL (AH) 120.1	Bearings are Magnetic Elevations in FEET AMSL
---------------------	--------------------	------------------	--------------	--------------------------	-------------------------	------------------------	--



10 NM MSA 2500

**TRANSITION:**

**CANTY:** From CANTY to JAYBI:  
Track 175° to SOAPY  
Track 175° to JAYBI  
Then follow ARRIVAL instruction

**MELBOURNE:** From ML VOR to JAYBI:  
(ML VOR) Track 263° to JAYBI  
Then follow ARRIVAL instruction

**APPLE:** From APPLE to JAYBI:  
Track 137° to SOAPY  
Track 175° to JAYBI  
Then follow ARRIVAL instruction

**ARRIVAL: JAYBI FIVE (RNAV):**

**RWY 18:** From JAYBI:  
• Track 176° to BEKKA  
• Track 176° to TEMPL  
• Intercept RWY 18 LOC

**RWY 36:** From JAYBI:  
• Track 176° to BEKKA  
• Track 176° to TEMPL  
From TEMPL expect tracking instructions or radar vectors for final

**COMMUNICATIONS FAILURE: PROCEDURE IN IMC**

- Squawk 7600, comply with vertical navigation requirements, but not below MSA.
- Track via the latest STAR clearance to the nominated runway, then fly the most suitable approach in accordance with ERSA EMERG Section 1.5.

Changes: AWIS FREQ.

MAVSR01-170