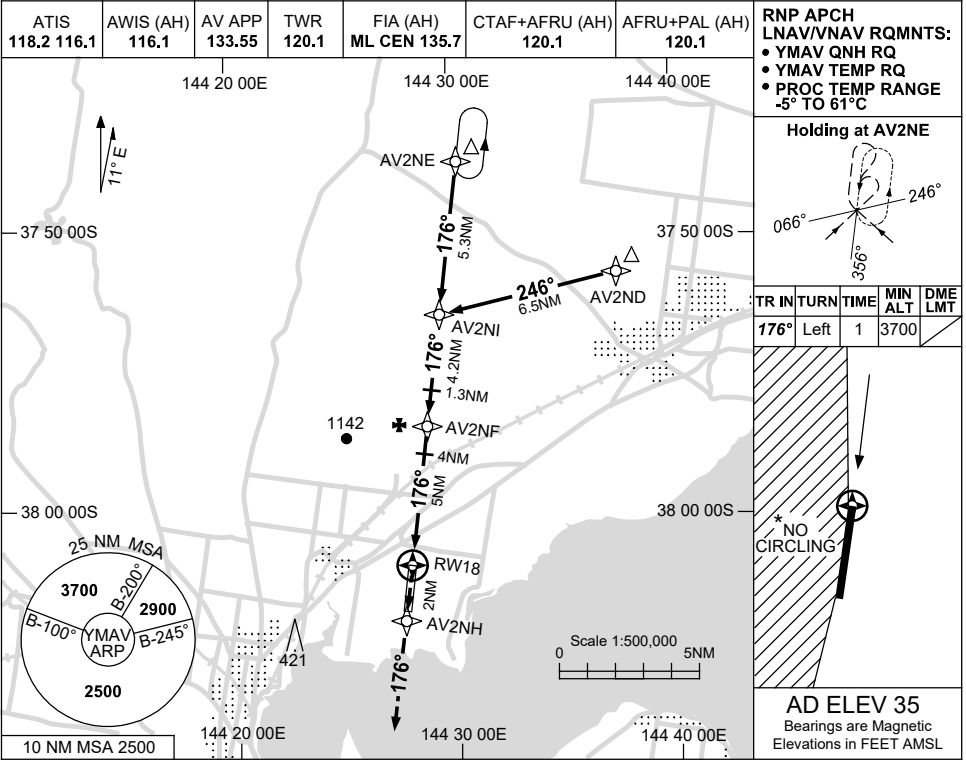


USE QNH

RNP RWY 18
AVALON, VIC (YMAV)

30 NOV 2023



RNP APCH LNAV/VNAV RQMNTS:

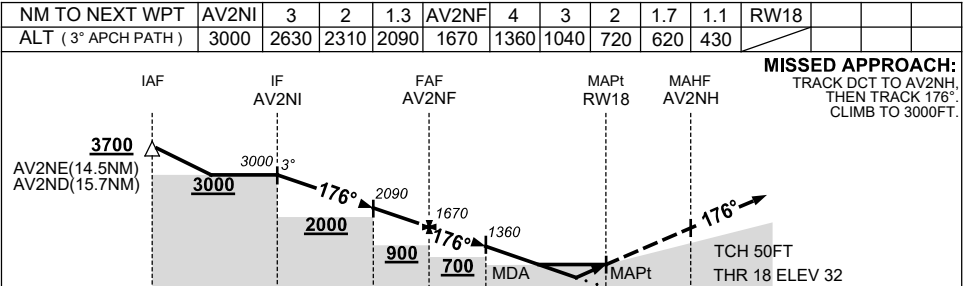
- YMAV QNH RQ
- YMAV TEMP RQ
- PROC TEMP RANGE -5° TO 61°C

Holding at AV2NE

TR	TURN	TIME	MIN ALT	DME LMT
176°	Left	1	3700	

AD ELEV 35
Bearings are Magnetic
Elevations in FEET AMSL

* NO CIRCLING



NOTES

CATEGORY	A	B	C	D
LNAV/VNAV		430 (398-2.2)		
LNAV		620 (585-3.3)		
CIRCLING*	660 (625-2.4)		760 (725-4.0)	830 (795-5.0)
ALTERNATE	(1125-4.4)		(1225-6.0)	(1295-7.0)

- * 1. NO CIRCLING WEST OF RWY 18/36.
- 2. HOLDING NOT CONTAINED WITHIN CTA.

Changes: REVISED PROC, Editorial.

MAVGN01-177