

**STANDARD INSTRUMENT DEPARTURES (SID)  
 AVALON FIVE DEPARTURE (RADAR)  
 AVALON, VIC (YMAV)**

**24 MAR 2022**

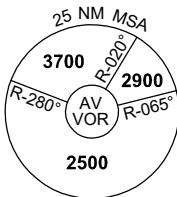
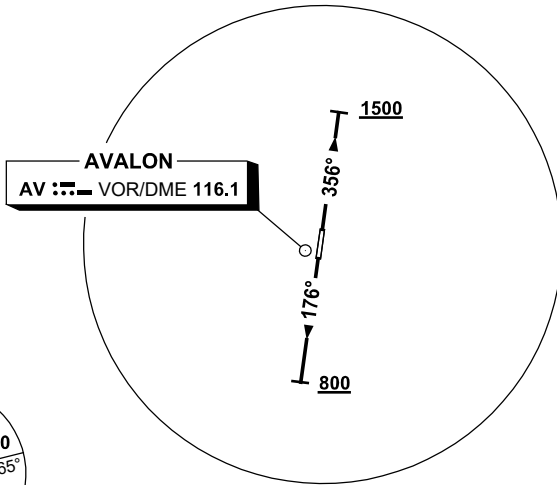
ATIS 118.2 116.1	AWIS (AH) 116.1	AV APP 133.55	TWR 120.1	FIA (AH) ML CEN 135.7	CTAF+AFRU (AH) 120.1	AFRU+PAL (AH) 120.1	Bearings are Magnetic Elevations in FEET AMSL
---------------------	--------------------	------------------	--------------	--------------------------	-------------------------	------------------------	--------------------------------------------------

NOT TO SCALE



**SPEED  
 MAX IAS 250KT  
 BELOW 10,000ft**

**CLASS D SPEED  
 LIMITS APPLY**



10 NM MSA 2500

GRAD 3.3%

**AVALON FIVE DEPARTURE (RADAR)**

**RWY 18**

- Track 176°
- At or ABV 800ft turn to assigned heading or track
- Contact AV Approach for Radar Vector

**RWY 36**

- Track 356°
- At or ABV 1500ft turn to assigned heading or track
- Contact AV Approach for Radar Vector

**COMMUNICATIONS FAILURE PROCEDURE**

On recognition of communication failure

- Squawk 7600
- Maintain last assigned vector for two minutes, and
- CLIMB IF NECESSARY TO MINIMUM SAFE ALTITUDE, to maintain terrain clearance, then
- proceed in accordance with the latest ATC route clearance acknowledged.