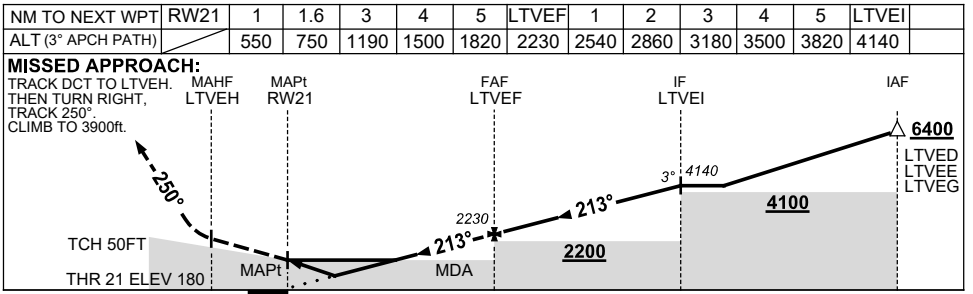
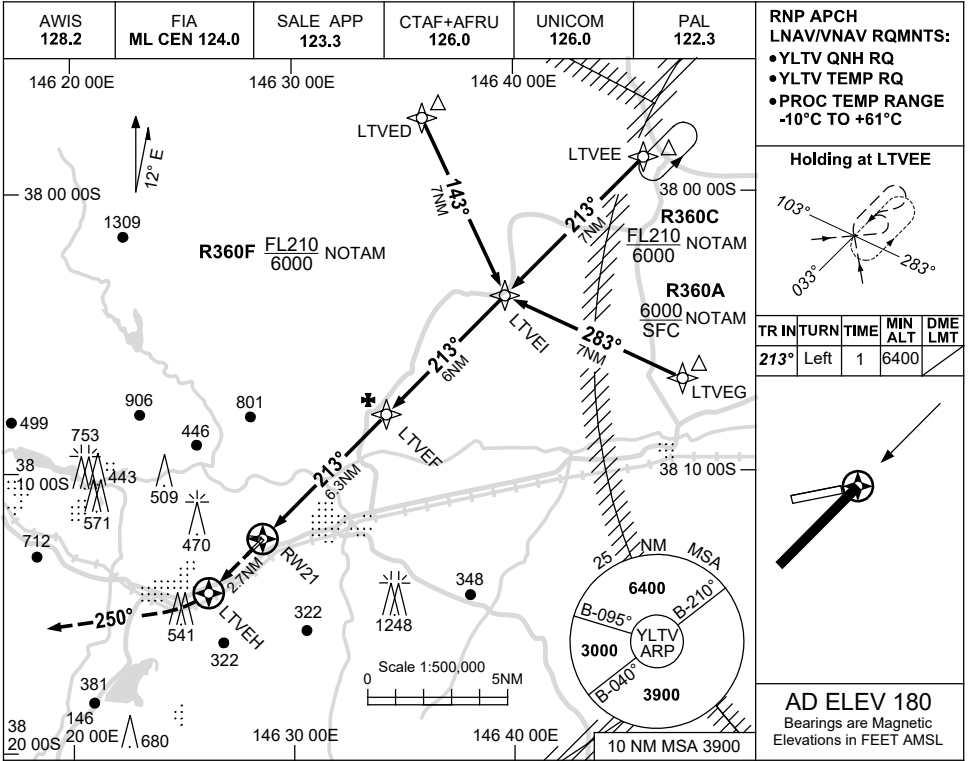


USE QNH

RNP RWY 21

30 NOV 2023

LATROBE VALLEY, VIC (YLTV)



NOTES

1. MAX IAS:
INITIAL : 210KT.
2. **CAUTION:**
INITIAL & INTERMEDIATE SEGMENT OVERLAP HOLDING & INITIAL SEGMENTS FOR YWSL RNP RWY 09 PROC.
3. INITIAL SEGMENTS INFRINGE R360A/C/F; AWY CLR RQ.

CATEGORY	A	B	C	D
LNAV/VNAV	550 (370-2.1)			NOT APPLICABLE
LNAV	750 (570-3.2)			
CIRCLING	980 (800-2.4)		1470 (1290-4.0)	
ALTERNATE	(1300-4.4)		(1790-6.0)	

Changes: R359A-G DELETED, R360A-F ADDED, NOTE 3, Editorial.

LTVGN02-177