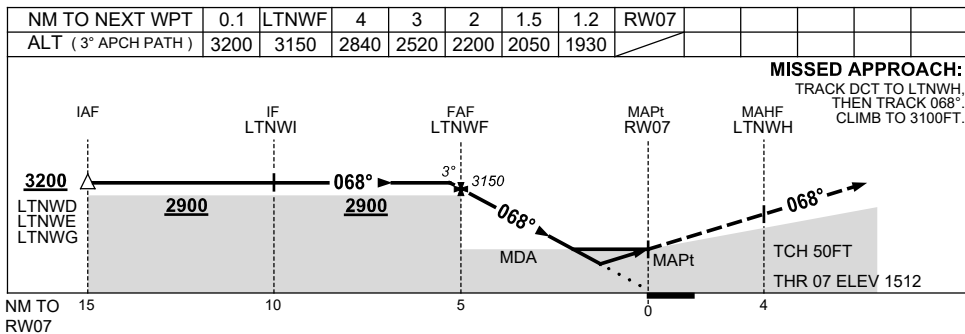
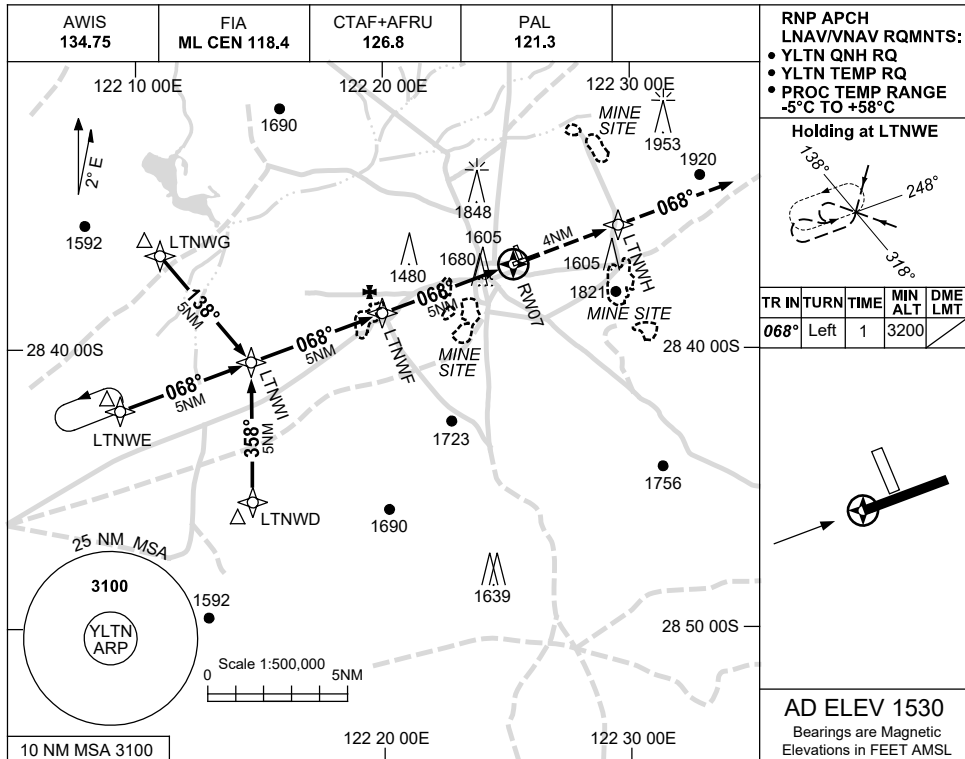


USE QNH

RNP RWY 07
LAVERTON, WA (YLTN)

7 SEP 2023



NOTES

CATEGORY	A	B	C	D
LNAV/VNAV		1930 (418-2.3)		NOT APPLICABLE
LNAV		2050 (538-3.0)		
CIRCLING	2250 (720-2.4)		2400 (870-4.0)	
ALTERNATE	(1220-4.4)		(1370-6.0)	

1. MAX IAS:
INITIAL : 210KT.

Changes: CHART TITLE, PBN SPECIFICATION BOX, Editorial.

LTNGN02-176