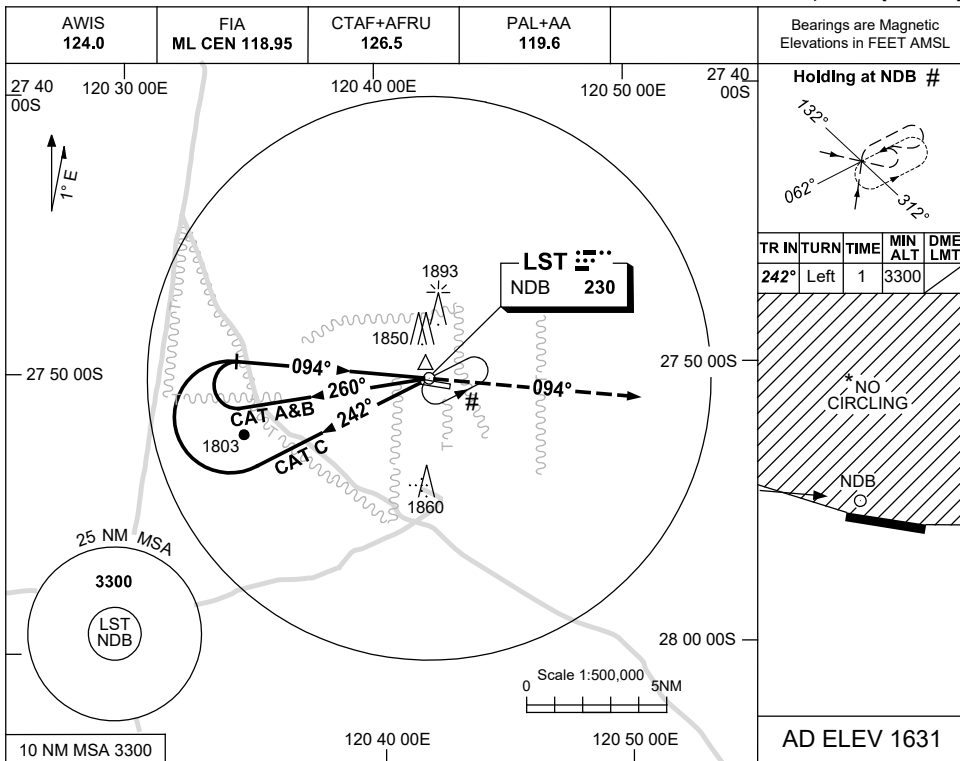


USE QNH

NDB RWY 10
LEINSTER, WA (YLST)

7 SEP 2023



Holding at NDB #

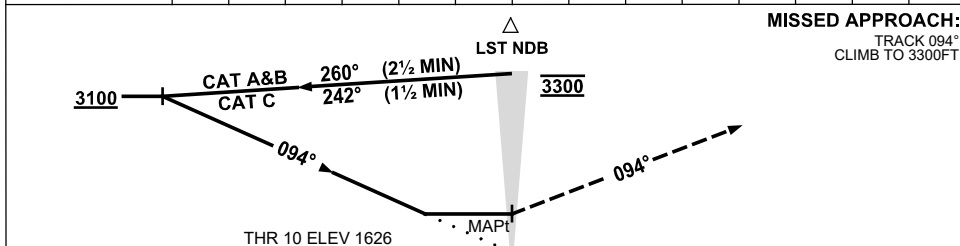
TR	TURN	TIME	MIN ALT	DME LMT
242°	Left	1	3300	

* NO CIRCLING

NDB

AD ELEV 1631

DME DIST	NOT APPLICABLE									
ALT										



NOTES

1. MAX IAS:
INITIAL : 210KT.
 - * 2. NO CIRCLING NORTH OF RWY 10/28.
 - # 3. ACFT MUST CTC YBLU PRIOR TO HOLD ON CTAF.
- CAUTION:** PROC IS OVERLAID BY YBLU RNP RWY 01.

CATEGORY	A	B	C	D
S-I NDB	2320 (689-3.9)			NOT APPLICABLE
CIRCLING *	2350 (719-2.4)	2450 (819-4.0)		
ALTERNATE	(1219-4.4)		(1319-6.0)	

Changes: NOTE 3.

LSTNB01-176