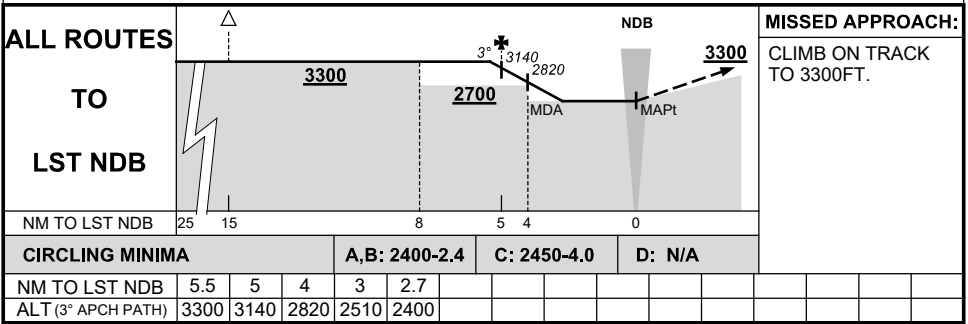
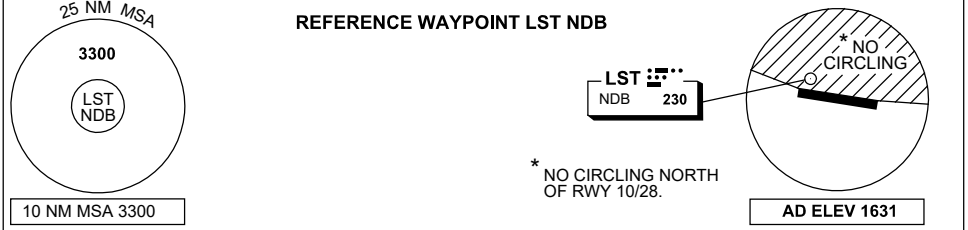


GNSS ARRIVAL PROCEDURES LEINSTER, WA (YLST)

8 SEP 2022

AWIS 124.0	FIA ML CEN 118.95	CTAF+AFRU 126.5	PAL+AA 119.6		Bearings are Magnetic Elevations in FEET AMSL
---------------	----------------------	--------------------	-----------------	--	--



Changes: 10 NM MSA, 25 NM MSA.

LSTDG01-172